

STATE OF ALABAMA)
COUNTY OF BALDWIN)

**RESOLUTION #2016-026
OF THE
BALDWIN COUNTY COMMISSION**

**AMENDING RESOLUTION #99-84 OF THE BALDWIN COUNTY COMMISSION
(AUGUST 17, 1999, REGULAR MEETING),**

**AS FURTHER AMENDED BY RESOLUTION #2002-36 OF THE BALDWIN
COUNTY COMMISSION (MARCH 5, 2002, SPECIAL MEETING),**

**AS FURTHER AMENDED BY RESOLUTION #2002-71 OF THE BALDWIN
COUNTY COMMISSION (JULY 2, 2002, REGULAR MEETING),**

**AS FURTHER AMENDED BY RESOLUTION #2003-41 OF THE BALDWIN
COUNTY COMMISSION (MAY 20, 2003, REGULAR MEETING),**

**AS FURTHER AMENDED BY RESOLUTION #2004-47 OF THE BALDWIN
COUNTY COMMISSION (JANUARY 20, 2004, REGULAR MEETING),**

**AS FURTHER AMENDED BY RESOLUTION #2004-103 OF THE BALDWIN
COUNTY COMMISSION (JULY 27, 2004, SPECIAL MEETING),**

**AS FURTHER AMENDED BY RESOLUTION #2006-44 OF THE BALDWIN
COUNTY COMMISSION (DECEMBER 19, 2005, REGULAR MEETING),**

**AS FURTHER AMENDED BY RESOLUTION #2006-101 OF THE BALDWIN
COUNTY COMMISSION (JUNE 6, 2006, REGULAR MEETING),**

**AS FURTHER AMENDED BY RESOLUTION #2008-12 OF THE BALDWIN
COUNTY COMMISSION (OCTOBER 2, 2007, REGULAR MEETING),**

**AS FURTHER AMENDED BY RESOLUTION #2008-67 OF THE BALDWIN
COUNTY COMMISSION (FEBRUARY 5, 2008, REGULAR MEETING),**

**AS FURTHER AMENDED BY RESOLUTION #2008-72 OF THE BALDWIN
COUNTY COMMISSION (FEBRUARY 19, 2008, REGULAR MEETING),**

**AS FURTHER AMENDED BY RESOLUTION #2012-076 OF THE BALDWIN
COUNTY COMMISSION (JULY 3, 2012, REGULAR MEETING),**

**AS FURTHER AMENDED BY RESOLUTION #2013-083 OF THE BALDWIN
COUNTY COMMISSION (JUNE 18, 2013, REGULAR MEETING),**

AS FURTHER AMENDED BY RESOLUTION #2013-102 (AUGUST 6, 2013, REGULAR MEETING),

AS FURTHER AMENDED BY RESOLUTION #2014-017 (NOVEMBER 5, 2013, REGULAR MEETING),

AS FURTHER AMENDED BY RESOLUTION #2014-059 (FEBRUARY 18, 2014, REGULAR MEETING),

AS FURTHER AMENDED BY RESOLUTION #2014-108 (JULY 17, 2014, REGULAR MEETING),

AS FURTHER AMENDED BY RESOLUTION #2015-105 (JULY 21, 2015, REGULAR MEETING),

THROUGH WHICH THE AMENDATORY COMBINATION EITHER PROVIDED FOR THE COMPREHENSIVE ESTABLISHMENT OR LIMITED CHANGES AND ALTERATIONS OF THE CONFIGURATION, BOUNDARIES, OR DESIGNATION OF THE VOTING PRECINCTS AND DESIGNATION OF VOTING (POLLING) PLACES IN BALDWIN COUNTY, ALABAMA, IN ORDER TO ACCOMPLISH REAPPORTIONMENT OR MAKE IT MORE CONVENIENT FOR VOTERS TO VOTE OR TO FACILITATE THE ADMINISTRATION OF THE ELECTION PROCESS OR TO CONSOLIDATE VOTING PRECINCTS WHEN NECESSITATED, AS AUTHORIZED PURSUANT TO §17-6-1 THROUGH §17-6-9 CODE OF ALABAMA 1975, AND WITHOUT LIMITATION; TO, FURTHER, PROVIDE AMENDATORY PROVISIONS TO ACCOMPLISH THE FOLLOWING:

- 1. Realigning the boundaries of Voting Precinct No. 28 (Lillian) and Voting Precinct No. 32 (Elberta).**

Section 1. Statutory Authority

WHEREAS, pursuant to §17-6-6 (a) Code of Alabama 1975, as amended, the County Commission of Baldwin County, Alabama, retains the sole authority to change the configuration, boundaries, or designation of the Voting Precincts in Baldwin County, Alabama, and, furthermore, any change so determined shall be adopted by resolution; and

WHEREAS, further, pursuant to §17-6-6 (b) Code of Alabama 1975, as amended, the County Commission of Baldwin County, Alabama, is authorized to change a precinct by dividing the precinct into two or more precincts in order to make it more convenient for voters to vote, or to facilitate the administration of the election process, or to accomplish reapportionment or when it becomes necessary to consolidate precinct(s); and

WHEREAS, further, pursuant to §17-6-4 Code of Alabama 1975, as amended, the County Commission of Baldwin County, Alabama, is, further, authorized to designate and select a Voting Place for each Voting Precinct; and

WHEREAS, further, pursuant to §17-6-2 Code of Alabama 1975, as amended, the County Commission of Baldwin County, Alabama, makes such changes, alterations or reconfigurations to the applicable Voting Precincts, by defining their new physical boundaries through data and assistance provided pursuant to §17-6-6 through §17-6-8 Code of Alabama 1975, as amended, by the Reapportionment Office of the State of Alabama, as clearly visible, definable and observable which were based upon criteria established and recognized by the Bureau of the Census of the United States Department of Commerce for purposes of defining standard census units [i.e. U.S. Census Bureau - Tract(s), Block Group(s), Block(s)]; and

WHEREAS, because of the aforementioned, Resolution #99-84 of the Baldwin County Commission, as amended, defines the physical boundaries of the Voting Precincts by reference to standard census units [i.e. U.S. Census Bureau - Tract(s), Block Group(s), Block(s)].

Section 2. Legislative History of Voting Precincts / Voting (Polling) Places utilized for the election of, and involving, Federal, State, District and County offices, in Baldwin County, Alabama, since adoption of the current 1999 Baldwin County Redistricting Plan.

WHEREAS, on August 17, 1999, the Voting Precincts and Voting (Polling) Places, utilized for the election of, and involving, Federal, State, District and County offices, in Baldwin County, Alabama, were adopted by the County Commission of Baldwin County, Alabama, during their August 17, 1999, regular meeting, through an instrument of this county governing body embodied as Resolution #99-84 of the Baldwin County Commission, such adoption conterminous with the adoption of the prior and non effective alignment of Baldwin County's seven, single-member, County Commission Districts, commonly referred to as the 1999 Baldwin County Redistricting Plan, through an instrument of this county governing body embodied as Resolution #99-76 of the Baldwin County Commission, during the August 17, 1999, regular meeting; and

WHEREAS, both Resolution #99-84 of the Baldwin County Commission and Resolution #99-76 of the Baldwin County Commission were submitted by the County Commission of Baldwin County, Alabama, pursuant to Section 5 of the Voting Rights Act of 1965 (42 U.S.C. 1973c.), as amended, to the United States Department of Justice, Civil Rights Division, Voting Section, the latter granting the required "Preclearance," on October 22, 1999, therefore authorizing both instruments as legally enforceable; and

WHEREAS, on March 5, 2002, the County Commission of Baldwin County, Alabama, provided for the change and alteration of the configuration, boundaries, or designation of a limited number of Voting Precincts and designation of a limited number of Voting (Polling) Places, utilized for the election of, and involving, Federal, State, District and County offices, in Baldwin County, Alabama, during the March 5, 2002, special meeting, through an instrument of this county governing body embodied as Resolution #2002-36 of the Baldwin County Commission, or what is commonly referred to as the Baldwin County Limited Voting Precinct Realignment Plan # 1 (2002); and

WHEREAS, Resolution #2002-36 of the Baldwin County Commission was submitted by the County Commission of Baldwin County, Alabama, pursuant to Section 5 of the Voting Rights Act of

1965 (42 U.S.C. 1973c.), as amended, to the United States Department of Justice, Civil Rights Division, Voting Section, the latter granting the required "Preclearance," on May 13, 2002, therefore authorizing such instrument as legally enforceable; and

WHEREAS, on July 2, 2002, the County Commission of Baldwin County, Alabama, provided for the change and alteration of the configuration, boundaries, or designation of a limited number of Voting Precincts and designation of a limited number of Voting (Polling) Places, utilized for the election of, and involving, Federal, State, District and County offices, in Baldwin County, Alabama, during the July 2, 2002, regular meeting, through an instrument of this county governing body embodied as Resolution #2002-71 of the Baldwin County Commission, or what is commonly referred to as the Baldwin County Limited Voting Precinct Realignment Plan # 2 (2002); and

WHEREAS, Resolution #2002-71 of the Baldwin County Commission was submitted by the County Commission of Baldwin County, Alabama, pursuant to Section 5 of the Voting Rights Act of 1965 (42 U.S.C. 1973c.), as amended, to the United States Department of Justice, Civil Rights Division, Voting Section, the latter granting the required "Preclearance," on August 28, 2002, therefore authorizing such instrument as legally enforceable; and

WHEREAS, on May 20, 2003, the County Commission of Baldwin County, Alabama, provided for the change and alteration of the configuration, boundaries, or designation of a limited number of Voting Precincts and designation of a limited number of Voting (Polling) Places, utilized for the election of, and involving, Federal, State, District & County offices, in Baldwin County, Alabama, during the May 20, 2003, regular meeting, through an instrument of this county governing body embodied as Resolution #2003-41 of the Baldwin County Commission, or what is commonly referred to as the Baldwin County Limited Voting Precinct Realignment Plan # 3 (2003); and

WHEREAS, Resolution #2003-41 of the Baldwin County Commission was submitted by the County Commission of Baldwin County, Alabama, pursuant to Section 5 of the Voting Rights Act of 1965 (42 U.S.C. 1973c.), as amended, to the United States Department of Justice, Civil Rights Division, Voting Section, the latter granting the required "Preclearance," on June 23, 2003, therefore authorizing such instrument as legally enforceable; and

WHEREAS, on January 20, 2004, the County Commission of Baldwin County, Alabama, provided for the change and alteration of the configuration, boundaries, or designation of a limited number of Voting Precincts and designation of a limited number of Voting (Polling) Places, utilized for the election of, and involving, Federal, State, District and County offices, in Baldwin County, Alabama, during the January 20, 2004, regular meeting, through an instrument of this county governing body embodied as Resolution #2004-47 of the Baldwin County Commission, or what is commonly referred to as the Baldwin County Limited Voting Precinct Realignment Plan # 4 (2004); and

WHEREAS, Resolution #2004-47 of the Baldwin County Commission was submitted by the County Commission of Baldwin County, Alabama, pursuant to Section 5 of the Voting Rights Act of 1965 (42 U.S.C. 1973c.), as amended, to the United States Department of Justice, Civil Rights Division, Voting Section, the latter granting the required "Preclearance," on April 1, 2004, therefore authorizing such instrument as legally enforceable; and

WHEREAS, on July 27, 2004, the County Commission of Baldwin County, Alabama, provided for the change and alteration of the configuration, boundaries, or designation of a limited number of Voting Precincts and designation of a limited number of Voting (Polling) Places, utilized for the election of, and involving, Federal, State, District and County offices, in Baldwin County, Alabama, during the July 27, 2004, special meeting, through an instrument of this county governing body embodied as Resolution #2004-103 of the Baldwin County Commission, or what is commonly referred to as the Baldwin County Limited Voting Precinct Realignment Plan # 5 (2004); and

WHEREAS, Resolution #2004-103 of the Baldwin County Commission was submitted by the County Commission of Baldwin County, Alabama, pursuant to Section 5 of the Voting Rights Act of 1965 (42 U.S.C. 1973c.), as amended, to the United States Department of Justice, Civil Rights Division, Voting Section, the latter granting the required "Preclearance," on October 4, 2004, therefore authorizing such instrument as legally enforceable; and

WHEREAS, on December 19, 2005, the County Commission of Baldwin County, Alabama, provided for the relocation and designation of a Voting (Polling) Place, utilized for the election of, and involving, Federal, State, District and County offices, in Baldwin County, Alabama, during the December 19, 2005, regular meeting, through an instrument of this county governing body embodied as Resolution #2006-44 of the Baldwin County Commission; and

WHEREAS, Resolution #2006-44 of the Baldwin County Commission was submitted by the County Commission of Baldwin County, Alabama, pursuant to Section 5 of the Voting Rights Act of 1965 (42 U.S.C. 1973c.), as amended, to the United States Department of Justice, Civil Rights Division, Voting Section, the latter granting the required "Preclearance," on February 13, 2006, therefore authorizing such instrument as legally enforceable; and

WHEREAS, on June 6, 2006, the County Commission of Baldwin County, Alabama, provided for the change and alteration of the configuration, boundaries, or designation of a limited number of Voting Precincts and designation of a Voting (Polling) Place, utilized for the election of, and involving, Federal, State, District and County offices, in Baldwin County, Alabama, during the June 6, 2006, regular meeting, through an instrument of this county governing body embodied as Resolution #2006-101 of the Baldwin County Commission, or what is commonly referred to as the Baldwin County Limited Voting Precinct Realignment Plan # 6 (2006); and

WHEREAS, Resolution #2006-101 of the Baldwin County Commission was submitted by the County Commission of Baldwin County, Alabama, pursuant to Section 5 of the Voting Rights Act of 1965 (42 U.S.C. 1973c.), as amended, to the United States Department of Justice, Civil Rights Division, Voting Section, the latter granting the required "Preclearance," on July 24, 2006, therefore authorizing such instrument as legally enforceable; and

WHEREAS, on October 2, 2007, the County Commission of Baldwin County, Alabama, provided for the change and alteration of the configuration, boundaries, or designation of a limited number of Voting Precincts and designation of a limited number of Voting (Polling) Places, utilized for the election of, and involving, Federal, State, District and County offices, in Baldwin County, Alabama, during the October 2, 2007, regular meeting, through an instrument of this county governing body embodied as Resolution #2008-12 of the Baldwin County Commission, or what is

commonly referred to as the Baldwin County Limited Voting Precinct Realignment Plan # 7 (2007); and

WHEREAS, Resolution #2008-12 of the Baldwin County Commission was submitted by the County Commission of Baldwin County, Alabama, pursuant to Section 5 of the Voting Rights Act of 1965 (42 U.S.C. 1973c.), as amended, to the United States Department of Justice, Civil Rights Division, Voting Section, the latter granting the required "Preclearance," on December 17, 2007, therefore authorizing such instrument as legally enforceable; and

WHEREAS, on February 5, 2008, the County Commission of Baldwin County, Alabama, provided for the designation of a limited number of Voting (Polling) Places, utilized for the election of, and involving, Federal, State, District and County offices, in Baldwin County, Alabama, during the February 5, 2008, regular meeting, through an instrument of this county governing body embodied as Resolution #2008-67 of the Baldwin County Commission; and

WHEREAS, Resolution #2008-67 of the Baldwin County Commission was submitted by the County Commission of Baldwin County, Alabama, pursuant to Section 5 of the Voting Rights Act of 1965 (42 U.S.C. 1973c.), as amended, to the United States Department of Justice, Civil Rights Division, Voting Section, the latter granting the required "Preclearance," on March 6, 2008, therefore authorizing such instrument as legally enforceable; and

WHEREAS, on February 19, 2008, the County Commission of Baldwin County, Alabama, provided for the change and alteration of the configuration of the boundaries of a limited number of Voting Precincts utilized for the election of, and involving, Federal, State, District and County offices, in Baldwin County, Alabama, during the February 19, 2008, regular meeting, through an instrument of this county governing body embodied as Resolution #2008-72 of the Baldwin County Commission, or what is commonly referred to as the Baldwin County Limited Voting Precinct Realignment Plan # 8 (2008); and

WHEREAS, Resolution #2008-72 of the Baldwin County Commission was submitted by the County Commission of Baldwin County, Alabama, pursuant to Section 5 of the Voting Rights Act of 1965 (42 U.S.C. 1973c.), as amended, to the United States Department of Justice, Civil Rights Division, Voting Section, the latter granting the required "Preclearance," on April 14, 2008, therefore authorizing such instrument as legally enforceable; and

WHEREAS, on July 3, 2012, the County Commission of Baldwin County, Alabama, provided for the change and alteration of the configuration of the boundaries of a limited number of Voting Precincts in Baldwin County, Alabama, as well as provided for the designation of a limited number of Voting Places, during the July 3, 2012, regular meeting, through an instrument of this county governing body embodied as Resolution #2012-076 of the Baldwin County Commission, or what is commonly referred to as the Baldwin County Limited Voting Precinct Realignment Plan # 9 (2012);

WHEREAS, Resolution #2012-076 of the Baldwin County Commission was submitted by the County Commission of Baldwin County, Alabama, pursuant to Section 5 of the Voting Rights Act of 1965 (42 U.S.C. 1973c.), as amended, to the United States Department of Justice, Civil

Rights Division, Voting Section, the latter granting the required "Preclearance," on August 27, 2012, therefore authorizing such instrument as legally enforceable; and

WHEREAS, on June 18, 2013, the County Commission of Baldwin County, Alabama, provided for the change and alteration of the configuration of the boundaries of a limited number of Voting Precincts in Baldwin County, Alabama, as well as provided for the designation of a limited number of Voting Places, during the June 18, 2013, regular meeting, through an instrument of this county governing body embodied as Resolution #2013-083 of the Baldwin County Commission, or what is commonly referred to as the Baldwin County Limited Voting Precinct Realignment Plan # 10 (2013); and

WHEREAS, pursuant to *Shelby County, Alabama v. Holder, Attorney General, et al.*, Supreme Court of the United States, as issued on June 25, 2013, Resolution #2013-083 of the Baldwin County Commission is not subject to Section 5 of the Voting Rights Act of 1965 (42 U.S.C. 1973c.), as amended; and

WHEREAS, on August 6, 2013, the County Commission of Baldwin County, Alabama, provided for the designation of a Voting Place, during the August 6, 2013, regular meeting, through an instrument of this county governing body embodied as Resolution #2013-102 of the Baldwin County Commission, and

WHEREAS, pursuant to *Shelby County, Alabama v. Holder, Attorney General, et al.*, Supreme Court of the United States, as issued on June 25, 2013, Resolution #2013-102 of the Baldwin County Commission is not subject to Section 5 of the Voting Rights Act of 1965 (42 U.S.C. 1973c.), as amended; and

WHEREAS, on November 5, 2013, the County Commission of Baldwin County, Alabama, provided for the designation of a Voting Place, during the November 5, 2013, regular meeting, through an instrument of this county governing body embodied as Resolution #2014-017 of the Baldwin County Commission, and

WHEREAS, pursuant to *Shelby County, Alabama v. Holder, Attorney General, et al.*, Supreme Court of the United States, as issued on June 25, 2013, Resolution #2014-017 of the Baldwin County Commission is not subject to Section 5 of the Voting Rights Act of 1965 (42 U.S.C. 1973c.), as amended; and

WHEREAS, on February 18, 2014, the County Commission of Baldwin County, Alabama, provided for the designation of a Voting Place and realigned several Voting Precinct boundaries, during the February 18, 2014, regular meeting, through an instrument of this county governing body embodied as Resolution #2014-059 of the Baldwin County Commission, and

WHEREAS, pursuant to *Shelby County, Alabama v. Holder, Attorney General, et al.*, Supreme Court of the United States, as issued on June 25, 2013, Resolution #2014-059 of the Baldwin County Commission is not subject to Section 5 of the Voting Rights Act of 1965 (42 U.S.C. 1973c.), as amended; and

WHEREAS, on July 17, 2014, the County Commission of Baldwin County, Alabama, provided for the designation of a Voting Place, during the July 17, 2014, regular meeting, through an instrument of this county governing body embodied as Resolution #2014-108 of the Baldwin County Commission, and

WHEREAS, pursuant to *Shelby County, Alabama v. Holder*, Attorney General, et al., Supreme Court of the United States, as issued on June 25, 2013, Resolution #2014-108 of the Baldwin County Commission is not subject to Section 5 of the Voting Rights Act of 1965 (42 U.S.C. 1973c.), as amended; now therefore

WHEREAS, on July 21, 2015, the County Commission of Baldwin County, Alabama, provided for the designation of a Voting Place, during the July 21, 2015, regular meeting, through an instrument of this county governing body embodied as Resolution #2015-105 of the Baldwin County Commission, and

WHEREAS, pursuant to *Shelby County, Alabama v. Holder*, Attorney General, et al., Supreme Court of the United States, as issued on June 25, 2013, Resolution #2015-105 of the Baldwin County Commission is not subject to Section 5 of the Voting Rights Act of 1965 (42 U.S.C. 1973c.), as amended; now therefore

Section 3. Implementing the provisions of Resolution #2016-026 of the Baldwin County Commission.

BE IT RESOLVED AND ORDERED BY THE BALDWIN COUNTY COMMISSION, IN REGULAR SESSION ASSEMBLED, that:

We hereby, further, amend Resolution #99-84 of the Baldwin County Commission, as amended, thereby deleting certain provisions with deletions delineated by being **STRUCK THROUGH** and inclusions delineated by being **DOUBLE UNDERLINED** only as follows:

VOTING PRECINCT 1-1
VOTING PLACE: LITTLE RIVER, LITTLE RIVER VOLUNTEER FIRE DEPARTMENT

This Voting Precinct is defined as follows:

Precinct 1: Baldwin County: Tract 010100: Block Group 1: Block 1000, Block 1001, Block 1002, Block 1003, Block 1004, Block 1005, Block 1006, Block 1007, Block 1008, Block 1009, Block 1010, Block 1011, Block 1012, Block 1013, Block 1014, Block 1015, Block 1016, Block 1017, Block 1018, Block 1019, Block 1020, Block 1021, Block 1022, Block 1023, Block 1024, Block 1025, Block 1026, Block 1027, Block 1028, Block 1029, Block 1030, Block 1031, Block 1032, Block 1033, Block 1034, Block 1035, Block 1036, Block 1037, Block 1038, Block 1039, Block 1040, Block 1041, Block 1042, Block 1043, Block 1044, Block 1045, Block 1046, Block 1047, Block 1048, Block 1049, Block 1050, Block 1051, Block 1052, Block 1053, Block 1054, Block

1055, Block 1056, Block 1057, Block 1058, Block 1059, Block 1060, Block 1061, Block 1062, Block 1063, Block 1064, Block 1065, Block 1066, Block 1067, Block 1068, Block 1069, Block 1070, Block 1071, Block 1072, Block 1073, Block 1074, Block 1075, Block 1076, Block 1077, Block 1078, Block 1079, Block 1080, Block 1081, Block 1082, Block 1083, Block 1084, Block 1085, Block 1086, Block 1087, Block 1088, Block 1089, Block 1090, Block 1091, Block 1092, Block 1093, Block 1094, Block 1095, Block 1096, Block 1097, Block 1098, Block 1099, Block 1100, Block 1101, Block 1102, Block 1103, Block 1104, Block 1105, Block 1106, Block 1107, Block 1108, Block 1109, Block 1110, Block 1111, Block 1112, Block 1113, Block 1114, Block 1115, Block 1116, Block 1117, Block 1118, Block 1119, Block 1120, Block 1121, Block 1122, Block 1123, Block 1124, Block 1125, Block 1135, Block 1136, Block 1142, Block 1143, Block 1165, Block 1166, Block 1167, Block 1168, Block 1169, Block 1170, Block 1172, Block 1173, Block 1174 and Block 1999; Block Group 4: Block 4000, Block 4001, Block 4002, Block 4003, Block 4004, Block 4005, Block 4006, Block 4007, Block 4008, Block 4009, Block 4010, Block 4011, Block 4012, Block 4013, Block 4014, Block 4015, Block 4016, Block 4017, Block 4018, Block 4019, Block 4020, Block 4030, Block 4031, Block 4032, Block 4033, Block 4034, Block 4035, Block 4036, Block 4037, Block 4038, Block 4039, Block 4040, Block 4041, Block 4042, Block 4043, Block 4044, Block 4045, Block 4066, Block 4067, Block 4068, Block 4069, Block 4985, Block 4986, Block 4987, Block 4988 and Block 4999.

VOTING PRECINCT 1-2
VOTING PLACE: TENSAW, VOLUNTEER FIRE DEPARTMENT

This Voting Precinct is defined as follows:

Precinct 2: Baldwin County: Tract 010100: Block Group 3: Block 3099; Block Group 4: Block 4021, Block 4022, Block 4023, Block 4024, Block 4025, Block 4026, Block 4027, Block 4028, Block 4029, Block 4046, Block 4047, Block 4048, Block 4049, Block 4050, Block 4051, Block 4052, Block 4053, Block 4054, Block 4055, Block 4056, Block 4057, Block 4058, Block 4059, Block 4060, Block 4061, Block 4062, Block 4063, Block 4064, Block 4065, Block 4070, Block 4071, Block 4072, Block 4073, Block 4074, Block 4075, Block 4076, Block 4077, Block 4078, Block 4079, Block 4080, Block 4081, Block 4082, Block 4083, Block 4084, Block 4085, Block 4086, Block 4087, Block 4088, Block 4089, Block 4090, Block 4091, Block 4092, Block 4093, Block 4094, Block 4095, Block 4096, Block 4097, Block 4098, Block 4099, Block 4100, Block 4101, Block 4102, Block 4103, Block 4104, Block 4105, Block 4106, Block 4107, Block 4108, Block 4109, Block 4110, Block 4111, Block 4112, Block 4113, Block 4114, Block 4115, Block 4116, Block 4117, Block 4118, Block 4119, Block 4120, Block 4121, Block 4122, Block 4123, Block 4124, Block 4129, Block 4130,

Block 4136, Block 4989, Block 4990, Block 4991, Block 4992, Block 4993, Block 4995, Block 4997 and Block 4998.

VOTING PRECINCT 1-3
VOTING PLACE: VAUGHN, COMMUNITY CENTER

This Voting Precinct is defined as follows:

Precinct 3: Baldwin County: Tract 010100: Block Group 3: Block 3025, Block 3026, Block 3027, Block 3028, Block 3029, Block 3030, Block 3031, Block 3033, Block 3034, Block 3035, Block 3036, Block 3037, Block 3038, Block 3039, Block 3040, Block 3041, Block 3042, Block 3045, Block 3047, Block 3092, Block 3093, Block 3094, Block 3097, Block 3098, Block 3995, Block 3996, Block 3997, Block 3998 and Block 3999; Block Group 4: Block 4125 and Block 4996.

VOTING PRECINCT 1-4
VOTING PLACE: CROSSROADS, DURANT CHAPEL BAPTIST CHURCH

Voting Precinct is defined as follows:

Precinct 4: Baldwin County: Tract 0101: Block Group 3: Block 396, Block 397; Tract 0103: Block Group 2: Block 203, Block 204, Block 205, Block 206, Block 207, Block 208, Block 209, Block 210, Block 211, Block 212, Block 213, Block 214, Block 215, Block 216, Block 217, Block 246, Block 247, Block 248, Block 249, Block 250, Block 287, Block 288, Block 289; Block Group 3: Block 316, Block 317, Block 319, Block 320, Block 321, Block 322, Block 323, Block 324, Block 325, Block 326, Block 327, Block 328, Block 329, Block 330, Block 331, Block 332, Block 333, Block 334, Block 335, Block 336, Block 337, Block 340, Block 341, Block 342, Block 343, Block 344, Block 345; Block Group 4: Block 429, Block 436, Block 437, Block 438, Block 439, Block 440, Block 441, Block 442, Block 443, Block 444, Block 445, Block 446; Tract 0107.01: Block Group 1: Block 101, Block 102, Block 103, Block 104, Block 105.

VOTING PRECINCT 1-5
VOTING PLACE: BAY MINETTE, BOYKIN CENTER BUILDING

This Voting Precinct is defined as follows:

Precinct 5: Baldwin County: Tract 010300: Block Group 1: Block 1000, Block 1001, Block 1002, Block 1003, Block 1004, Block 1005, Block 1006, Block 1007, Block 1008, Block 1009, Block 1010, Block 1011, Block 1012, Block 1013, Block 1014, Block 1015, Block 1016,

Block 1017, Block 1018, Block 1019, Block 1020, Block 1022 and Block 1023; Tract 010500: Block Group 1: Block 1075; Tract 010600: Block Group 1: Block 1002, Block 1003, Block 1004, Block 1005, Block 1006, Block 1007, Block 1008, Block 1009, Block 1010, Block 1011, Block 1012, Block 1013, Block 1014, Block 1015, Block 1016, Block 1017 and Block 1018; Block Group 3: Block 3022.

VOTING PRECINCT 1-6

**VOTING PLACE: BROMLEY, CROSSROADS VOLUNTEER FIRE DEPARTMENT
SUBSTATION**

This Voting Precinct is defined as follows:

Precinct 6: Baldwin County: Tract 0103: Block Group 2: Block 238, Block 239, Block 241, Block 242, Block 243, Block 244, Block 251, Block 252, Block 253, Block 254, Block 255, Block 256, Block 257, Block 258, Block 259, Block 260, Block 261, Block 262, Block 263, Block 265, Block 266, Block 267, Block 268, Block 269, Block 270, Block 271, Block 272, Block 273, Block 277; Tract 0107.01: Block Group 1: Block 106, Block 107, Block 108, Block 109, Block 110, Block 111, Block 112, Block 113, Block 114, Block 115, Block 116, Block 117; Tract 0107.03: Block Group 1: Block 101, Block 102, Block 103, Block 104, Block 105, Block 106, Block 107, Block 108, Block 109, Block 112, Block 113, Block 114.

VOTING PRECINCT 1-7 A

**VOTING PLACE: EASTERN GREATER SPANISH FORT / MALBIS, NEW LIFE
ASSEMBLY OF GOD**

This Voting Precinct is defined as follows:

Precinct 7-A: Baldwin County: Tract 010703: Block Group 1: Block 1007, Block 1008, Block 1009, Block 1010, Block 1014 and Block 1015; Block Group 2: Block 2000, Block 2001, Block 2002, Block 2003, Block 2004, Block 2005, Block 2006, Block 2007, Block 2008, Block 2009, Block 2010, Block 2011, Block 2012, Block 2013, Block 2014, Block 2015, Block 2016, Block 2017, Block 2018, Block 2019, Block 2020, Block 2021, Block 2022, Block 2023, Block 2024, Block 2025, Block 2026, Block 2027, Block 2028, Block 2029, Block 2030, Block 2031, Block 2032, Block 2033, Block 2034, Block 2035, Block 2036, Block 2037, Block 2038, Block 2039, Block 2040, Block 2041, Block 2042, Block 2043, Block 2044, Block 2045, Block 2046, Block 2047, Block 2048, Block 2049, Block 2050, Block 2051, Block 2052, Block 2053, Block 2054, Block 2055, Block 2056, Block 2057, Block 2058, Block 2059, Block 2060, Block 2061, Block 2062,

Block 2063, Block 2064, Block 2065, Block 2066, Block 2067,
Block 2068, Block 2069, Block 2070, Block 2071, Block 2072,
Block 2073, Block 2074, Block 2075, Block 2076, Block 2077,
Block 2078, Block 2079, Block 2080, Block 2081, Block 2082,
Block 2083, Block 2084, Block 2085, Block 2086, Block 2087,
Block 2088, Block 2089, Block 2090, Block 2091, Block 2092,
Block 2093, Block 2094, Block 2096, Block 2097, Block 2098,
Block 2154, Block 2155, Block 2156, Block 2157 and Block 2158;
Tract 010704: Block Group 1: Block 1000, Block 1036, Block
1037, Block 1052, Block 1053 and Block 1054.

VOTING PRECINCT 1-7 B

(Abolished: certain and limited territory realigned into Voting Precinct 7-49, Voting Precinct 3-23 & Voting Precinct 6-42 A pursuant to Resolution #2004-103 of the Baldwin County Commission, during the July 27, 2004, special meeting; further, deactivated / undesignated Voting Place [Daphne Intermediate School] and granted "Preclearance" from the United States Department of Justice, Civil Rights Division, Voting Section, on October 4, 2004)

VOTING PRECINCT 1-8

VOTING PLACE: LOXLEY, ELLISVILLE COMMUNITY CENTER

Voting Precinct is defined as follows:

Precinct 8: Baldwin County: Tract 0109.01: Block Group 1: Block 103C, Block 104, Block 105, Block 106; Block Group 2: Block 209, Block 210, Block 211, Block 220, Block 221, Block 222, Block 223, Block 224, Block 225, Block 226B, Block 257, Block 258, Block 259.

VOTING PRECINCT 1-9

VOTING PLACE: LOXLEY, TOWN HALL

This Voting Precinct is defined as follows:

Precinct 9: Baldwin County: Tract 010400: Block Group I: Block 1128, Block 1129, Block 1132, Block 1133, Block 1138, Block 1139, Block 1140, Block 1141, Block 1142, Block 1143, Block 1144 and Block 1150; Tract 010901: Block Group 1: Block 1000, Block 1001, Block 1002, Block 1003, Block 1004, Block 1007, Block 1008, Block 1009, Block 1010, Block 1011, Block 1012, Block 1013, Block 1021, Block 1022 and Block 1024; Block Group 2: Block 2000, Block 2001, Block 2002, Block 2003, Block 2004, Block 2005, Block 2006, Block 2007, Block 2008, Block 2009, Block 2010, Block 2011, Block 2012, Block 2013, Block 2014, Block 2015, Block 2017, Block 2027, Block 2028, Block 2029, Block 2030, Block 2031, Block 2032, Block 2033, Block 2034, Block 2035, Block 2036, Block 2037, Block

2038, Block 2039, Block 2040, Block 2041, Block 2042, Block 2043, Block 2044, Block 2045, Block 2046, Block 2047, Block 2048, Block 2049, Block 2050, Block 2051, Block 2052, Block 2053, Block 2054, Block 2055, Block 2056 and Block 2057; Block Group 3: Block 3006, Block 3007, Block 3008, Block 3009, Block 3010, Block 3026, Block 3027, Block 3028, Block 3029, Block 3030, Block 3031, Block 3032, Block 3033, Block 3034, Block 3035, Block 3036, Block 3037, Block 3038, Block 3039, Block 3040, Block 3041, Block 3042, Block 3043, Block 3044, Block 3045, Block 3046, Block 3047, Block 3048, Block 3052, Block 3053, Block 3054, Block 3055, Block 3056, Block 3998 and Block 3999.

VOTING PRECINCT 2-10

(Abolished: territory realigned into Voting Precinct 1-1 pursuant to Resolution #2002-71 of the Baldwin County Commission, during the July 2, 2002, regular meeting, and granted "Preclearance" from the United States Department of Justice, Civil Rights Division, Voting Section, on August 28, 2002)

VOTING PRECINCT 2-11

VOTING PLACE: LOTTIE, FIRE DEPARTMENT

This Voting Precinct is defined as follows:

Precinct 11: Baldwin County: Tract 0101: Block Group 1: Block 161, Block 162, Block 163, Block 168, Block 169, Block 170, Block 171, Block 172, Block 173, Block 174, Block 175, Block 176, Block 177, Block 179, Block 180, Block 181, Block 182, Block 183, Block 184, Block 185, Block 186, Block 187, Block 188, Block 189, Block 190, Block 191, Block 192, Block 193, Block 194, Block 195, Block 196, Block 197; Block Group 2: Block 201, Block 202, Block 203, Block 204, Block 205, Block 206, Block 207, Block 208, Block 209, Block 210, Block 211, Block 212, Block 213, Block 214, Block 215, Block 223, Block 224, Block 225, Block 226, Block 227, Block 228, Block 229, Block 230, Block 232, Block 233, Block 238, Block 239, Block 240, Block 241, Block 242, Block 243, Block 244, Block 245, Block 246, Block 247, Block 248, Block 251, Block 290, Block 292, Block 293, Block 294, Block 295, Block 296, Block 297; Escambia County: Tract 9704: Block Group 5: Block 588.

VOTING PRECINCT 2-12

VOTING PLACE: STOCKTON, CIVIC BUILDING

Voting Precinct is defined as follows:

Precinct 12: Baldwin County: Tract 010100: Block Group 2: Block 2027, Block 2028, Block 2029, Block 2049, Block 2050,

Block 2051, Block 2052, Block 2053, Block 2080 and Block 2081;
Block Group 3: Block 3000, Block 3001, Block 3002, Block 3003,
Block 3004, Block 3005, Block 3006, Block 3007, Block 3008,
Block 3010, Block 3017, Block 3018, Block 3019, Block 3022,
Block 3023, Block 3024, Block 3032, Block 3043, Block 3044,
Block 3046, Block 3048, Block 3049, Block 3050, Block 3051,
Block 3052, Block 3053, Block 3054, Block 3055, Block 3056,
Block 3057, Block 3058, Block 3070, Block 3071, Block 3072,
Block 3073, Block 3075, Block 3076, Block 3077, Block 3078,
Block 3079, Block 3080, Block 3081, Block 3082, Block 3084,
Block 3085, Block 3086, Block 3087, Block 3088, Block 3089,
Block 3090, Block 3091, Block 3100 and Block 3101; Block
Group 4: Block 4126, Block 4127, Block 4128, Block 4131,
Block 4132, Block 4133, Block 4134, Block 4135 and Block 4994.

VOTING PRECINCT 2-13
VOTING PLACE: RABUN, FIRE HOUSE

This Voting Precinct is defined as follows:

Precinct 13: Baldwin County: Tract 0101: Block Group 2: Block 234, Block 235, Block 236, Block 237, Block 249, Block 250, Block 252, Block 253, Block 254, Block 255, Block 256, Block 257, Block 258, Block 259, Block 260, Block 261, Block 262, Block 263, Block 264, Block 265, Block 266, Block 267, Block 269, Block 270, Block 271, Block 272, Block 273, Block 274, Block 275, Block 276, Block 277, Block 278, Block 279, Block 280, Block 281, Block 282, Block 283, Block 284, Block 285, Block 286, Block 287, Block 288, Block 289, Block 291; Block Group 3: Block 311, Block 312, Block 313, Block 314, Block 339, Block 340, Block 341, Block 342, Block 343, Block 344, Block 345, Block 346, Block 347, Block 348, Block 349, Block 350, Block 371, Block 372.

VOTING PRECINCT 2-14
VOTING PLACE: PERDIDO, VOLUNTEER FIRE DEPARTMENT STATION #1

This Voting Precinct is defined as follows:

Precinct 14: Baldwin County: Tract 0101: Block Group 2: Block 268; Tract 0102: Block Group 1: Block 101, Block 102, Block 103, Block 104, Block 105, Block 106, Block 107, Block 108, Block 109, Block 110, Block 111, Block 112, Block 113, Block 114, Block 115, Block 116, Block 117, Block 118, Block 119, Block 120, Block 121, Block 122, Block 123, Block 124, Block 125, Block 126, Block 127, Block 128, Block 129, Block 130, Block 131, Block 132, Block 133, Block 134, Block 135, Block 136, Block 137, Block 138, Block 139,

Block 140, Block 141, Block 142, Block 143, Block 144, Block 145, Block 146, Block 147, Block 148, Block 149, Block 150B, Block 152, Block 153, Block 186, Block 187, Block 188, Block 189, Block 190, Block 191, Block 192, Block 193, Block 194, Block 195, Block 196, Block 197; Block Group 2: Block 201, Block 202, Block 203, Block 204, Block 205, Block 206, Block 207, Block 208, Block 209, Block 210, Block 211, Block 212, Block 213, Block 214, Block 215, Block 216, Block 217, Block 218, Block 229, Block 230, Block 231, Block 232, Block 233, Block 234, Block 235, Block 236, Block 237, Block 238, Block 239, Block 240, Block 241, Block 242, Block 243, Block 244, Block 245, Block 278, Block 279.

VOTING PRECINCT 2-15
VOTING PLACE: BAY MINETTE, CITY HALL & CIVIC CENTER

This Voting Precinct is defined as follows:

Precinct 15: Baldwin County: Tract 010100: Block Group 3: Block 3074, Block 3083, Block 3102 and Block 3103; Tract 010200: Block Group 1: Block 1049, Block 1050, Block 1051, Block 1052, Block 1053, Block 1054, Block 1055, Block 1056, Block 1057, Block 1058, Block 1059, Block 1060, Block 1061, Block 1062, Block 1063, Block 1064, Block 1065, Block 1066, Block 1067, Block 1068, Block 1069, Block 1070, Block 1071, Block 1072, Block 1073, Block 1074, Block 1075, Block 1076, Block 1077, Block 1078, Block 1079, Block 1080, Block 1081, Block 1082, Block 1083, Block 1084, Block 1085, Block 1086, Block 1087, Block 1088, Block 1089, Block 1090, Block 1091, Block 1092, Block 1093, Block 1094, Block 1095, Block 1096, Block 1097, Block 1098 and Block 1099; Block Group 2: Block 2016, Block 2017, Block 2018, Block 2019, Block 2020, Block 2021, Block 2023, Block 2024, Block 2025, Block 2026, Block 2027, Block 2028, Block 2029, Block 2030, Block 2031, Block 2032, Block 2033, Block 2034, Block 2035, Block 2036, Block 2037, Block 2039 and Block 2040; Tract 010300: Block Group 3: Block 3000, Block 3001, Block 3002, Block 3003, Block 3004, Block 3005, Block 3006, Block 3007, Block 3008, Block 3009, Block 3010, Block 3011, Block 3012, Block 3013, Block 3014, Block 3015, Block 3016, Block 3997, Block 3998 and Block 3999; Block Group 4: Block 4000, Block 4001, Block 4002, Block 4003, Block 4004, Block 4005, Block 4006, Block 4007, Block 4008, Block 4009, Block 4010, Block 4011, Block 4012, Block 4013, Block 4014, Block 4015, Block 4016, Block 4017, Block 4018, Block 4019, Block 4020 and Block 4021; Tract 010400: Block Group 1: Block 1024, Block 1025, Block 1026, Block 1027, Block 1028, Block 1029, Block 1030, Block 1031, Block 1032, Block 1033, Block 1034, Block 1035, Block 1036, Block 1037,

Block 1038 and Block 1167; Block Group 2: Block 2031, Block 2032, Block 2033, Block 2034, Block 2035, Block 2036, Block 2037, Block 2038, Block 2039 and Block 2040; Tract 010500: Block Group 1: Block 1000, Block 1001, Block 1002, Block 1003, Block 1004, Block 1005, Block 1006, Block 1007, Block 1008, Block 1009, Block 1010, Block 1011, Block 1012, Block 1013, Block 1014, Block 1015, Block 1016, Block 1017, Block 1018, Block 1019, Block 1020, Block 1021, Block 1022, Block 1023, Block 1024, Block 1025, Block 1026, Block 1027, Block 1028, Block 1029, Block 1030, Block 1031, Block 1032, Block 1033, Block 1034, Block 1035, Block 1036, Block 1037, Block 1038, Block 1039, Block 1040, Block 1041, Block 1042, Block 1043, Block 1044, Block 1045, Block 1046, Block 1047, Block 1048, Block 1049, Block 1050, Block 1051, Block 1052, Block 1053, Block 1054, Block 1055, Block 1056, Block 1057, Block 1058, Block 1059, Block 1060, Block 1061, Block 1062, Block 1063, Block 1064, Block 1065, Block 1066, Block 1067, Block 1068, Block 1069, Block 1070, Block 1071, Block 1072, Block 1073, Block 1074, Block 1076, Block 1077 and Block 1078; Block Group 2: Block 2000, Block 2001, Block 2002, Block 2003, Block 2004, Block 2005, Block 2006, Block 2007, Block 2008, Block 2009, Block 2010, Block 2011, Block 2012, Block 2013, Block 2014, Block 2015, Block 2016, Block 2017, Block 2018, Block 2019, Block 2020, Block 2021, Block 2022, Block 2023, Block 2024, Block 2025, Block 2026, Block 2027, Block 2028, Block 2029, Block 2030, Block 2031, Block 2032, Block 2033, Block 2034, Block 2035, Block 2036, Block 2037, Block 2038, Block 2039, Block 2040, Block 2041, Block 2042, Block 2043, Block 2044, Block 2045, Block 2046, Block 2047, Block 2048, Block 2049, Block 2050, Block 2051, Block 2052, Block 2053, Block 2054 and Block 2055; Block Group 3: Block 3000, Block 3001, Block 3002, Block 3003, Block 3004, Block 3005, Block 3006, Block 3007, Block 3008, Block 3009, Block 3010, Block 3011, Block 3012, Block 3013, Block 3014, Block 3015, Block 3016, Block 3017, Block 3018, Block 3019, Block 3020, Block 3021, Block 3022, Block 3023, Block 3024, Block 3025, Block 3026, Block 3027, Block 3028, Block 3029, Block 3030, Block 3031, Block 3032, Block 3033, Block 3034, Block 3035, Block 3036, Block 3037, Block 3038, Block 3039, Block 3040, Block 3041, Block 3042, Block 3043, Block 3044, Block 3045, Block 3046, Block 3047, Block 3048, Block 3049, Block 3050, Block 3051, Block 3052, Block 3053 and Block 3999; Block Group 4: Block 4000, Block 4001, Block 4002, Block 4003, Block 4004, Block 4005, Block 4006, Block 4007, Block 4008, Block 4009, Block 4010, Block 4011, Block 4012, Block 4013, Block 4014, Block 4015, Block 4016, Block 4017, Block 4018, Block 4019, Block 4020, Block 4021, Block 4022, Block 4023, Block 4024,

Block 4025, Block 4026, Block 4027, Block 4028, Block 4029, Block 4030, Block 4031, Block 4032, Block 4033, Block 4034, Block 4035, Block 4036, Block 4037, Block 4038, Block 4039, Block 4040, Block 4041, Block 4042, Block 4043, Block 4044, Block 4045, Block 4046, Block 4047, Block 4048, Block 4049, Block 4050, Block 4051, Block 4052, Block 4053, Block 4054, Block 4055, Block 4056, Block 4057, Block 4058 and Block 4059; Tract 010600: Block Group 1: Block 1000 and Block 1001; Block Group 2: Block 2000, Block 2001, Block 2002, Block 2003, Block 2004, Block 2005, Block 2006, Block 2007, Block 2008, Block 2009, Block 2010, Block 2011, Block 2012, Block 2013, Block 2014, Block 2015, Block 2016, Block 2017, Block 2018, Block 2019, Block 2020, Block 2021, Block 2022, Block 2023, Block 2024, Block 2025, Block 2026, Block 2027, Block 2028, Block 2029, Block 2030, Block 2031, Block 2032 and Block 2033; Block Group 3: Block 3003, Block 3004, Block 3005, Block 3019, Block 3020, Block 3021, Block 3023, Block 3024, Block 3025, Block 3026, Block 3027, Block 3028, Block 3029, Block 3030, Block 3031, Block 3032, Block 3034 and Block 3035.

VOTING PRECINCT 2-16

VOTING PLACE: PINE GROVE VOLUNTEER FIRE DEPARTMENT STATION #1

Voting Precinct is defined as follows:

Precinct 16: Baldwin County: Tract 0103: Block Group 1: Block 122B, Block 126, Block 127, Block 128, Block 129, Block 130, Block 131, Block 162, Block 163, Block 164, Block 166; Tract 0104: Block Group 1: Block 105, Block 106, Block 107, Block 108, Block 109, Block 110, Block 111, Block 112, Block 113, Block 114, Block 115, Block 116, Block 117, Block 118, Block 119, Block 120, Block 132, Block 136, Block 137, Block 138, Block 142, Block 143, Block 144, Block 145, Block 146, Block 147, Block 148; Tract 0106: Block Group 3: Block 301A, Block 301B, Block 302, Block 303, Block 308, Block 309, Block 310, Block 311, Block 312, Block 313, Block 314, Block 315, Block 316, Block 317, Block 318, Block 319, Block 320, Block 321, Block 334, Block 335, Block 336, Block 337, Block 338B, Block 341, Block 342, Block 343, Block 344, Block 345, Block 346.

VOTING PRECINCT 2-17

VOTING PLACE: WHITE HOUSE, VOLUNTEER FIRE DEPARTMENT

This Voting Precinct is defined as follows:

Precinct 17: Baldwin County: Tract 0103: Block Group 1: Block 116, Block 118, Block 119, Block 120, Block 121, Block 132, Block

133, Block 141, Block 142, Block 143, Block 144, Block 145, Block 146, Block 147, Block 148, Block 167, Block 168, Block 169; Block Group 2: Block 201, Block 202, Block 218, Block 219, Block 220, Block 221, Block 222, Block 223, Block 224, Block 225, Block 226, Block 227, Block 228, Block 229, Block 240, Block 245, Block 290, Block 291, Block 292, Block 293, Block 294.

VOTING PRECINCT 2-18
VOTING PLACE: STAPLETON, VOLUNTEER FIRE DEPARTMENT

This Voting Precinct is defined as follows:

Precinct 18: Baldwin County: Tract 010300: Block Group 1: Block 1036, Block 1037, Block 1038, Block 1039, Block 1040, Block 1041, Block 1042, Block 1043, Block 1044 and Block 1045; Block Group 2: Block 2031, Block 2032, Block 2044, Block 2045, Block 2047 and Block 2048; Tract 010400: Block Group 1: Block 1056, Block 1057, Block 1058, Block 1059, Block 1060, Block 1061, Block 1062, Block 1063, Block 1064, Block 1065, Block 1066, Block 1067, Block 1068, Block 1069, Block 1070, Block 1071, Block 1072, Block 1073, Block 1074, Block 1075, Block 1076, Block 1077, Block 1078, Block 1079, Block 1080, Block 1081, Block 1082, Block 1083, Block 1084, Block 1085, Block 1086, Block 1087, Block 1088, Block 1130, Block 1131, Block 1134, Block 1135, Block 1136, Block 1137, Block 1153 and Block 1999.

VOTING PRECINCT 2-19
VOTING PLACE: GATESWOOD, FIRE STATION

This Voting Precinct is defined as follows:

Precinct 19: Baldwin County: Tract 010400: Block Group 1: Block 1000, Block 1001, Block 1006, Block 1007, Block 1008, Block 1009, Block 1010, Block 1011, Block 1012, Block 1013, Block 1014, Block 1015, Block 1016, Block 1017, Block 1018, Block 1019, Block 1020, Block 1021, Block 1022, Block 1048, Block 1049, Block 1050, Block 1054, Block 1055, Block 1089, Block 1090, Block 1091, Block 1092, Block 1093, Block 1094, Block 1095, Block 1096, Block 1097, Block 1098, Block 1099, Block 1100, Block 1104, Block 1105, Block 1112, Block 1113, Block 1114, Block 1115, Block 1116, Block 1117, Block 1118 and Block 1119; Block Group 2: Block 2014, Block 2015, Block 2016, Block 2017, Block 2018, Block 2019, Block 2020, Block 2024, Block 2025, Block 2026, Block 2027, Block 2028, Block 2029, Block 2030, Block 2041, Block 2042, Block 2043, Block 2044, Block 2045, Block 2046, Block 2047, Block 2048, Block 2049, Block 2050, Block 2051, Block 2052, Block 2053, Block 2054, Block 2055, Block 2056,

Block 2057, Block 2058, Block 2059, Block 2060, Block 2061, Block 2062, Block 2063, Block 2064, Block 2065, Block 2066, Block 2067, Block 2068, Block 2069, Block 2070, Block 2071, Block 2072, Block 2073, Block 2074, Block 2075, Block 2076, Block 2077, Block 2078, Block 2079, Block 2080, Block 2081, Block 2082, Block 2083, Block 2084, Block 2086, Block 2093, Block 2137 and Block 2138.

VOTING PRECINCT 3-20

(Abolished: territory realigned into Voting Precinct 2-19 pursuant to Resolution #2004-103 of the Baldwin County Commission, during the July 27, 2004, regular meeting; further, deactivated / undesignated Voting Place [Gateswood Hamilton Church] and granted "Preclearance" from the United States Department of Justice, Civil Rights Division, Voting Section, on October 4, 2004)

VOTING PRECINCT 3-21

VOTING PLACE: CLEAR SPRINGS, FELLOWSHIP HALL

This Voting Precinct is defined as follows:

Precinct 21: Baldwin County: Tract 0104: Block Group 2: Block 219, Block 239, Block 243, Block 244, Block 245, Block 246, Block 247, Block 248, Block 249, Block 250, Block 251, Block 252, Block 253, Block 254, Block 255, Block 256, Block 257, Block 258, Block 259, Block 260, Block 261, Block 262, Block 263, Block 264, Block 265, Block 266, Block 267, Block 268, Block 269, Block 270, Block 271, Block 272, Block 273, Block 274, Block 275, Block 296, Block 297.

VOTING PRECINCT 3-22

VOTING PLACE: ROSINTON UNITED METHODIST CHURCH

This Voting Precinct is defined as follows:

Precinct 22: Baldwin County: Tract 010400: Block Group 1: Block 1101, Block 1102, Block 1103, Block 1106, Block 1107, Block 1108, Block 1109, Block 1110, Block 1111, Block 1120, Block 1121, Block 1122, Block 1123, Block 1124, Block 1125, Block 1126, Block 1127, Block 1145, Block 1146, Block 1147, Block 1148, Block 1149, Block 1151 and Block 1152; Block Group 2: Block 2085 and Block 2089; Tract 010901: Block Group 3: Block 3000, Block 3001, Block 3002, Block 3003, Block 3004, Block 3005, Block 3011, Block 3012, Block 3013, Block 3014, Block 3015, Block 3016, Block 3017, Block 3018, Block 3019, Block 3020, Block 3021, Block 3022, Block 3023, Block 3024, Block 3025 and Block 3072; Block Group 4: Block 4001, Block 4002, Block 4003, Block 4004, Block 4005, Block 4006, Block 4007, Block 4008, Block 4009, Block 4010, Block 4012, Block 4013, Block

4014, Block 4015, Block 4016, Block 4017, Block 4018, Block 4019, Block 4022, Block 4030, Block 4998 and Block 4999.

VOTING PRECINCT 3-23
VOTING PLACE: BELFOREST, COMMUNITY CENTER

This Voting Precinct is defined as follows:

Precinct 23: Baldwin County: Tract 010703: Block Group 2: Block 2121, Block 2123, Block 2124, Block 2125, Block 2126, Block 2127, Block 2128, Block 2129, Block 2130, Block 2131, Block 2132, Block 2133, Block 2148 and Block 2149; Tract 010901: Block Group 1: Block 1017, Block 1018 and Block 1019; Tract 010902: Block Group 1: Block 1004, Block 1005, Block 1006, Block 1007, Block 1008 and Block 1009.

VOTING PRECINCT 3-24
VOTING PLACE: SILVERHILL, SILVERHILL TOWN HALL

Voting Precinct is defined as follows:

Precinct 24: Baldwin County: Tract 0109.01: Block Group 1: Block 111, Block 112; Block Group 3: Block 366, Block 367, Block 368, Block 369, Block 370; Tract 0109.02: Block Group 1: Block 101, Block 102, Block 103, Block 110, Block 111, Block 112, Block 113, Block 114, Block 115, Block 116, Block 117, Block 118, Block 121, Block 122, Block 123, Block 124, Block 125, Block 126, Block 127, Block 128, Block 129, Block 130, Block 131, Block 132, Block 133, Block 134, Block 135, Block 136, Block 137, Block 156, Block 157, Block 158; Block Group 2: Block 230, Block 231, Block 232, Block 233, Block 234, Block 235, Block 236, Block 244; Block Group 3: Block 309B, Block 310, Block 311; Block Group 4: Block 419A, Block 419B, Block 420A, Block 420B, Block 421, Block 422, Block 423, Block 424, Block 425, Block 426, Block 427, Block 428, Block 429, Block 430, Block 431, Block 432, Block 433, Block 434, Block 435, Block 436, Block 437, Block 438, Block 439, Block 440B, Block 458, Block 459, Block 460, Block 461, Block 462, Block 463, Block 464.

VOTING PRECINCT 3-25
VOTING PLACE: ROBERTSDALE, CITY HALL

This Voting Precinct is defined as follows:

Precinct 25: Baldwin County: Tract 0109.01: Block Group 3: Block 362, Block 363, Block 364, Block 365; Tract 0109.02: Block Group 2: Block 201, Block 202, Block 203, Block 204, Block 205, Block 206,

Block 207, Block 208, Block 209, Block 210, Block 211, Block 212, Block 213, Block 214, Block 215, Block 216, Block 217, Block 218, Block 219, Block 220A, Block 220B, Block 221A, Block 221B, Block 221C, Block 221D, Block 222A, Block 222B, Block 223, Block 224, Block 225A, Block 225B, Block 226, Block 227, Block 228, Block 229, Block 237, Block 238, Block 239, Block 240A, Block 240B, Block 241, Block 242, Block 243, Block 245, Block 246; Block Group 3: Block 301, Block 302A, Block 302B, Block 303, Block 304, Block 305, Block 306, Block 307, Block 308, Block 309A, Block 312, Block 313, Block 314, Block 315, Block 316, Block 317, Block 318, Block 319, Block 320, Block 321, Block 322, Block 323, Block 324, Block 325, Block 326, Block 327, Block 328, Block 329, Block 330, Block 331, Block 332, Block 333, Block 334, Block 335, Block 336, Block 337, Block 338, Block 339, Block 340, Block 341, Block 342, Block 343, Block 344, Block 345, Block 346, Block 347, Block 348, Block 349, Block 350, Block 351, Block 352, Block 353A, Block 353B, Block 354A, Block 354B, Block 355, Water Block 399E; Block Group 4: Block 401, Block 402, Block 403, Block 404, Block 405, Block 406, Block 407, Block 408, Block 409, Block 410, Block 411, Block 412, Block 413, Block 414, Block 415, Block 416, Block 417, Block 418, Block 440A, Block 441, Block 442, Block 443, Block 444, Block 445, Block 446, Block 447, Block 448, Block 449, Block 450; Block Group 5: Block 501, Block 502, Block 503, Block 504, Block 505, Block 506, Block 507, Block 508, Block 509, Block 510, Block 511, Block 512, Block 513, Block 514, Block 515, Block 516, Block 517, Block 518, Block 519, Block 520, Block 521, Block 522, Block 523, Block 524, Block 525, Block 526, Block 527, Block 528, Block 529, Block 530, Block 531, Block 532, Block 533, Block 534, Block 535, Block 536, Block 537, Block 538, Block 539, Block 540, Block 541, Block 542, Block 543, Block 545, Block 546, Block 547, Block 548, Block 549, Block 550; Tract 0110: Block Group 2: Block 296, Block 297.

VOTING PRECINCT 3-26
VOTING PLACE: ELSANOR, COMMUNITY CENTER

This Voting Precinct is defined as follows:

Precinct 26: Baldwin County: Tract 0109.01: Block Group 3: Block 338, Block 339; Block Group 4: Block 411, Block 419, Block 420, Block 421, Block 422, Block 423, Block 424, Block 425, Block 426, Block 428, Block 429, Block 430, Block 431, Block 432, Block 433, Block 434, Block 435, Block 436, Block 437, Block 438, Block 439, Block 440, Block 441, Block 442, Block 443, Block 444, Block 445, Block 446, Block 447, Block 448, Block 449, Block 450, Block 451, Block 452, Block 453, Block 454, Block 455, Block 456, Block 457, Block 458, Block 459, Block 460, Block 461, Block 462, Block 463, Block 464; Block Group 5: Block 508, Block 509, Block 510, Block 511, Block

512, Block 513, Block 514, Block 515, Block 516, Block 517, Block 518, Block 519, Block 520, Block 521, Block 522, Block 523, Block 524, Block 531, Block 532, Block 533, Block 534, Block 535, Block 536, Block 537, Block 538, Block 539, Block 540, Block 541, Block 542, Block 543, Block 544, Block 545, Block 546, Block 547, Block 594, Block 595; Tract 0110: Block Group 2: Block 201.

VOTING PRECINCT 3-27
VOTING PLACE: SEMINOLE, FIRE HOUSE

This Voting Precinct is defined as follows:

Precinct 27: Baldwin County: Tract 0109.01: Block Group 5: Block 501, Block 502, Block 503, Block 504, Block 505, Block 506, Block 507, Block 525, Block 526, Block 527, Block 528, Block 529, Block 530, Block 548, Block 549, Block 550, Block 551, Block 552, Block 553, Block 554, Block 555, Block 556, Block 557, Block 558, Block 559, Block 560, Block 561, Block 562, Block 563, Block 564, Block 565, Block 566, Block 567, Block 568, Block 569, Block 570, Block 571, Block 572, Block 573, Block 574, Block 575, Block 576, Block 577, Block 578, Block 579, Block 580, Block 581, Block 582, Block 583, Block 584, Block 585, Block 586, Block 587, Block 588, Block 589, Block 590, Block 591, Block 592, Block 593, Block 596, Block 597.

VOTING PRECINCT 3-28
VOTING PLACE: LILLIAN, LILLIAN COMMUNITY CENTER

Voting Precinct is defined as follows:

~~**Precinct 28:** Baldwin County: Tract 0110: Block Group 2: Block 251, Block 253, Block 254, Block 255; Tract 0116: Block Group 1: Block 101, Block 111, Block 112, Block 113, Block 166, Block 167; Block Group 3: Block 301, Block 302, Block 306, Block 307, Block 308, Block 387, Block 388, Block 389, Block 390, Block 391; Block Group 4: Block 401, Block 402, Block 403, Block 404, Block 405, Block 406, Block 407, Block 408, Block 409, Block 410, Block 411, Block 412, Block 413, Block 414, Block 415, Block 416, Block 417, Block 418, Block 419, Block 420, Block 421, Block 422, Block 423, Block 424, Block 425, Block 426, Block 427, Block 428, Block 429, Block 430, Block 431, Block 432, Block 433, Block 434, Block 435, Block 436, Block 437, Block 438, Block 439, Block 440, Block 441, Block 442, Block 443, Block 444, Block 445, Block 446, Block 447, Block 448, Block 449, Block 450, Block 451, Block 452, Block 453, Block 454, Block 455, Block 456, Block 457, Block 458, Block 459, Block 460, Block 461, Block 462, Block 463, Block 464; Block Group 5:~~

Precinct 28: Baldwin County: Tract 0110: Block Group 2: Block 251, Block 253, Block 254, Block 255; Tract 0116: Block Group 1: Block 101, Block 111, Block 112, Block 113; Block Group 3: Block 301, Block 302, Block 306, Block 307, Block 308, Block 387, Block 388, Block 389, Block 390, Block 391; Block Group 4: Block 401, Block 402, Block 403, Block 404, Block 405, Block 406, Block 407, Block 408, Block 409, Block 410, Block 411, Block 412, Block 413, Block 414, Block 415, Block 416, Block 417, Block 418, Block 419, Block 420, Block 421, Block 422, Block 423, Block 424, Block 425, Block 426, Block 427, Block 428, Block 429, Block 430, Block 431, Block 432, Block 433, Block 434, Block 435, Block 436, Block 437, Block 438, Block 439, Block 440, Block 441, Block 442, Block 443, Block 444, Block 445, Block 446, Block 447, Block 448, Block 449, Block 450, Block 451, Block 452, Block 453, Block 454, Block 455, Block 456, Block 457, Block 458, Block 459, Block 460, Block 461, Block 462, Block 463, Block 464; Block Group 5. GEOID: 01003 Tract: 011601, Block 1086, Block 1077, Block 1079

**VOTING PRECINCT 3-29
VOTING PLACE: PERDIDO BEACH, FIRE HOUSE**

This Voting Precinct is defined as follows:

Precinct 29: Baldwin County: Tract 0116: Block Group 2: Block 201, Block 202, Block 254; Block Group 3: Block 303, Block 304, Block 305, Block 309, Block 310, Block 311, Block 312, Block 315, Block 322, Block 323, Block 324, Block 325, Block 326, Block 327, Block 328, Block 329, Block 330, Block 331, Block 332, Block 333, Block 334, Block 335, Block 336, Block 337, Block 338, Block 339, Block 340, Block 341, Block 342, Block 343, Block 344.

**VOTING PRECINCT 4-30
VOTING PLACE: FISH RIVER / MARLOW, VOLUNTEER FIRE DEPARTMENT**

This Voting Precinct is defined as follows:

Precinct 30: Baldwin County: Tract 10905: Block Group 1: Block 18, Block 19, Block 23, Block 24, Block 46, Block 47, Block 48, Block 49, Block 50, Block 51, Block 56, Block 57, Block 58, Block 59, Block 60, Block 61, Block 62, Block 63, Block 64, Block 65, Block 66, Block 67, Block 68; Tract 11000: Block Group 1: Block 13, Block 14, Block 15, Block 16, Block 17, Block 18, Block 19, Block 20, Block 21, Block 22, Block 23, Block 24, Block 25, Block 26, Block 27, Block 28, Block 29, Block 30, Block 31, Block 32, Block 33, Block 34, Block 35, Block 36, Block 37, Block 38, Block 39, Block 42, Block 86, Block 87, Block 88; Tract 11401: Block Group 1: Block 5, Block 6; Block Group 5: Block 0, Block 1, Block 2, Block 3, Block 4, Block 5, Block 9, Block 10, Block 11, Block 13.

VOTING PRECINCT 4-31
VOTING PLACE: SUMMERDALE, COMMUNITY CENTER

This Voting Precinct is defined as follows:

Precinct 31: Baldwin County: Tract 0109.02: Block Group 4: Block 451, Block 452, Block 453, Block 454, Block 455, Block 456, Block 457; Block Group 5: Block 544; Tract 0110: Block Group 1: Block 101, Block 102, Block 103A, Block 103B, Block 104A, Block 104B, Block 105, Block 106, Block 107A, Block 107B, Block 108A, Block 108B, Block 109, Block 110, Block 111, Block 112, Block 113, Block 114, Block 115, Block 116, Block 117, Block 147, Block 148, Block 149, Block 150, Block 151, Block 152, Block 153, Block 154, Block 155, Block 156, Block 157, Block 158, Block 159, Block 160, Block 161, Block 162, Block 163, Block 164, Block 165, Block 166, Block 167, Block 168, Block 169, Block 170, Block 171, Block 172, Block 173, Block 174, Block 175, Block 176, Block 177, Block 178, Block 179A, Block 179B, Block 180A, Block 180B, Block 180C, Block 181, Block 182, Block 183, Block 185, Block 186, Block 187, Block 188A, Block 188B, Block 189, Block 190, Block 191; Block Group 2: Block 202, Block 203, Block 204, Block 205, Block 206, Block 207, Block 208, Block 209, Block 210A, Block 210B, Block 211A, Block 211B, Block 211C, Block 212A, Block 212B, Block 213, Block 214, Block 215A, Block 215B, Block 215C, Block 216, Block 217, Block 218, Block 219, Block 220, Block 221, Block 222, Block 223, Block 224, Block 225, Block 226, Block 227, Block 228, Block 229, Block 230, Block 231, Block 232, Block 233, Block 234, Block 235A, Block 235B, Block 235C, Block 236, Block 237, Block 238, Block 239, Block 240, Block 241, Block 242, Block 243, Block 244, Block 245, Block 246, Block 247, Block 248, Block 249, Block 250, Block 252, Block 256, Block 257, Block 258, Block 259, Block 260, Block 261, Block 262A, Block 262B, Block 263, Block 264, Block 265, Block 266, Block 267, Block 268, Block 269, Block 270, Block 271, Block 272, Block 273, Block 274, Block 275, Block 276, Block 277, Block 278, Block 279, Block 280, Block 281, Block 282, Block 283, Block 284, Block 285, Block 286, Block 287, Block 288, Block 289, Block 290, Block 291, Block 292, Block 293, Block 294, Block 295; Tract 0114.01: Block Group 1: Block 101, Block 102, Block 103, Block 104, Block 151, Block 154, Block 182, Block 183; Tract 0115: Block Group 5: Block 508, Block 509, Block 510, Block 511, Block 512, Block 513, Block 514, Block 515, Block 516, Block 517, Block 518, Block 520, Block 524, Block 525, Block 527B, Block 528, Block 532C, Block 585, Block 586, Block 588, Block 589, Block 590.

VOTING PRECINCT 4-32
VOTING PLACE: ELBERTA, CIVIC CENTER

Voting Precinct is defined as follows:

~~**Precinct 32: Baldwin County: Tract 011000: Block Group 2: Block 2045; Tract 011500: Block Group 4: Block 4000, Block 4001, Block 4033, Block 4034, Block 4035, Block 4036, Block 4037, Block 4038, Block 4039, Block 4040, Block 4041, Block 4042, Block 4043, Block 4044, Block 4045, Block 4046, Block 4047, Block 4048, Block 4049, Block 4050, Block 4051, Block 4052, Block 4053, Block 4056, Block 4057, Block 4058, Block 4059, Block 4061, Block 4062, Block 4063, Block 4064, Block 4065, Block 4066, Block 4067, Block 4068 and Block 4069; Block Group 5: Block 5000, Block 5073 and Block 5074; Tract 011600: Block Group 1: Block 1000, Block 1001, Block 1002, Block 1003, Block 1009, Block 1010, Block 1011, Block 1012, Block 1013, Block 1014, Block 1015, Block 1016, Block 1017, Block 1018, Block 1019, Block 1020, Block 1021, Block 1022, Block 1023, Block 1024, Block 1025, Block 1026, Block 1027, Block 1028, Block 1029, Block 1030, Block 1031, Block 1032, Block 1033, Block 1034, Block 1035, Block 1036, Block 1037, Block 1038, Block 1039, Block 1040, Block 1041, Block 1042 and Block 1043; Block Group 2: Block 2000, Block 2001, Block 2002, Block 2003, Block 2004, Block 2005, Block 2006, Block 2007, Block 2008, Block 2009, Block 2010, Block 2011, Block 2012, Block 2013, Block 2014, Block 2015, Block 2016, Block 2017, Block 2018, Block 2019, Block 2020, Block 2021, Block 2022, Block 2023, Block 2024, Block 2025, Block 2026, Block 2027, Block 2028, Block 2029, Block 2030, Block 2031, Block 2032, Block 2033, Block 2034, Block 2035, Block 2036, Block 2037, Block 2038, Block 2039, Block 2040, Block 2041, Block 2042, Block 2043, Block 2044, Block 2045, Block 2046, Block 2047, Block 2048, Block 2049, Block 2050, Block 2058, Block 2059, Block 2060, Block 2073, Block 2074 and Block 2075.**~~

Precinct 32: Baldwin County: Baldwin County: Tract 011000: Block Group 2: Block 2045; Tract 011500: Block Group 4: Block 4000, Block 4001, Block 4033, Block 4034, Block 4035, Block 4036, Block 4037, Block 4038, Block 4039, Block 4040, Block 4041, Block 4042, Block 4043, Block 4044, Block 4045, Block 4046, Block 4047, Block 4048, Block 4049, Block 4050, Block 4051, Block 4052, Block 4053, Block 4056, Block 4057, Block 4058, Block 4059, Block 4061, Block 4062, Block 4063, Block 4064, Block 4065, Block 4066, Block 4067, Block 4068 and Block 4069; Block Group 5: Block 5000, Block 5073 and Block 5074; Tract 011600: Block Group 1: Block 1000, Block 1001, Block 1002, Block 1003, Block 1009, Block 1010, Block 1011, Block 1012, Block 1013, Block 1014, Block 1015, Block 1016, Block 1017, Block 1018, Block 1019, Block 1020, Block 1021, Block 1022, Block 1023, Block 1024, Block 1025, Block 1026, Block 1027, Block 1028, Block 1029, Block

1030, Block 1031, Block 1032, Block 1033, Block 1034, Block 1035,
Block 1036, Block 1037, Block 1038, Block 1039, Block 1040, Block
1041, Block 1042 and Block 1043; Block Group 2: Block 2000, Block
2001, Block 2002, Block 2003, Block 2004, Block 2005, Block 2006,
Block 2007, Block 2008, Block 2009, Block 2010, Block 2011, Block
2012, Block 2013, Block 2014, Block 2015, Block 2016, Block 2017,
Block 2018, Block 2019, Block 2020, Block 2021, Block 2022, Block
2023, Block 2024, Block 2025, Block 2026, Block 2027, Block 2028,
Block 2029, Block 2030, Block 2031, Block 2032, Block 2033, Block
2034, Block 2035, Block 2036, Block 2037, Block 2038, Block 2039,
Block 2040, Block 2041, Block 2042, Block 2043, Block 2044, Block
2045, Block 2046, Block 2047, Block 2048, Block 2049, Block 2050,
Block 2058, Block 2059, Block 2060, Block 2073, Block 2074 and
Block 2075. GEO ID: 01003 Tract: 011601, Block 1078, Block 1082,
Block 1083, Block 1084, Block 1085

VOTING PRECINCT 4-33
VOTING PLACE: MIFLIN, COMMUNITY CENTER

This Voting Precinct is defined as follows:

Precinct 33: Baldwin County: Tract 11403: Block Group 2: Block 0, Block 97, Block 98, Block 99, Block 100; Block Group 3: Block 0, Block 1, Block 4, Block 5, Block 6, Block 7, Block 8, Block 9, Block 10, Block 11, Block 12, Block 13, Block 14, Block 15, Block 16, Block 17, Block 18, Block 19, Block 20, Block 21, Block 22, Block 23, Block 120, Block 121, Block 122, Block 124, Block 125, Block 135, Block 136, Block 137, Block 138, Block 139, Block 140, Block 141, Block 142, Block 143, Block 144, Block 145, Block 146, Block 147, Block 148; Tract 11406: Block Group 3: Block 43; Tract 11502: Block Group 4: Block 10, Block 11, Block 12, Block 13, Block 14, Block 15, Block 16, Block 17, Block 18, Block 19, Block 25, Block 26, Block 27, Block 28, Block 29, Block 30, Block 31, Block 32, Block 33, Block 34, Block 35, Block 36, Block 37, Block 38, Block 39, Block 40, Block 41, Block 42, Block 57, Block 58, Block 59, Block 60, Block 61, Block 63, Block 64, Block 65, Block 66, Block 67, Block 68, Block 69, Block 70, Block 71, Block 72, Block 73, Block 74, Block 75, Block 77, Block 79, Block 80, Block 81, Block 82; Tract 11601: Block Group 4: Block 5, Block 10, Block 11, Block 12, Block 13, Block 14, Block 15, Block 16, Block 17, Block 18, Block 19, Block 20, Block 21, Block 22, Block 23, Block 24, Block 25, Block 26, Block 27, Block 28, Block 29, Block 30, Block 31, Block 32, Block 34, Block 35, Block 36, Block 37, Block 38, Block 39, Block 40, Block 41, Block 42, Block 44, Block 46, Block 47, Block 50, Block 54, Block 55, Block 56, Block 62, Block 72, Block 73, Block 74, Block 98, Block 100, Block 102, Block 106, Block 107, Block 108.

VOTING PRECINCT 4-34
VOTING PLACE: JOSEPHINE, FIRE HOUSE

This Voting Precinct is defined as follows:

Precinct 34: Baldwin County: Tract 0116: Block Group 2: Block 255, Block 256, Block 257, Block 258, Block 259, Block 260, Block 261, Block 282, Block 283, Block 284, Block 285, Block 286, Block 287, Block 288, Block 289, Block 290, Block 291, Block 292; Block Group 3: Block 313, Block 314, Block 316, Block 317, Block 318, Block 319, Block 320, Block 321, Block 345, Block 346, Block 347, Block 348, Block 349, Block 350, Block 351, Block 352, Block 353, Block 354, Block 355, Block 356, Block 357, Block 358, Block 359, Block 360, Block 361, Block 362, Block 363, Block 364, Block 365, Block 366, Block 367, Block 368, Block 369, Block 370, Block 371, Block 372, Block 373, Block 374, Block 375, Block 376, Block 377, Block 378, Block 379, Block 380, Block 381, Block 382, Block 383, Block 384, Block 385, Block 386.

VOTING PRECINCT 4-35

(Abolished: territory realigned into Voting Precinct 6-44 pursuant to Resolution #2004-47 of the Baldwin County Commission, during the January 20, 2004, regular meeting; further, deactivated / undesignated Voting Place [Barnwell Baptist Church]; further, such actions granted "Preclearance" from the United States Department of Justice, Civil Rights Division, Voting Section, on April 1, 2004).

VOTING PRECINCT 4-36
VOTING PLACE: MAGNOLIA SPRINGS, WESLEYAN CHURCH

Voting Precinct is defined as follows:

Precinct 36: Baldwin County: Tract 0114.01: Block Group 1: Block 123, Block 124, Block 125, Block 126, Block 127, Block 128, Block 129, Block 130, Block 131, Block 132, Block 133, Block 134, Block 135, Block 136, Block 137, Block 138, Block 139, Block 140, Block 141, Block 142, Block 143, Block 144, Block 145, Block 146, Block 147, Block 148, Block 149, Block 150, Block 152, Block 153, Block 155, Block 156, Block 157, Block 158, Block 159, Block 160, Block 161, Block 162, Block 163, Block 164, Block 165, Block 166, Block 167, Block 168, Block 169, Block 170, Block 171, Block 172, Block 173, Block 174, Block 175, Block 176, Block 177, Block 178, Block 179, Block 180, Block 181; Block Group 2, Block Group 3: Block 301, Block 302, Block 303, Block 304, Block 305, Block 306, Block 307, Block 308, Block 309, Block 310, Block 311, Block 312, Block 313, Block 314, Block 315, Block 316, Block 317, Block 318, Block 319, Block 320, Block 321, Block 322, Block 323, Block 324, Block 325, Block 326, Block 327, Block 328,

Block 329, Block 330, Block 331, Block 332, Block 333, Block 334, Block 335, Block 336, Block 337, Block 338, Block 339, Block 340, Block 341, Block 342, Block 343, Block 344, Block 345, Block 346, Block 347, Block 348, Block 349, Block 350; Block Group 4: Block 412, Block 413, Block 414, Block 415, Block 417, Block 418, Block 419, Block 420, Block 421; Tract 0115: Block Group 2: Block 202B, Block 203, Block 204; Water Block 299B, Block Group 5: Block 526B, Block 526C, Block 526D, Block 587D.

VOTING PRECINCT 4-37
VOTING PLACE: BON SECOUR, MORGAN'S CHAPEL UNITED METHODIST CHURCH

This Voting Precinct is defined as follows:

Precinct 37: Baldwin County: Tract 0114.01: Block Group 4: Block 401, Block 402, Block 403, Block 404, Block 405, Block 406, Block 407, Block 408, Block 409, Block 410, Block 411, Block 416, Block 422, Block 423, Block 424, Block 425, Block 426, Block 427, Block 428, Block 429, Block 430, Block 431, Block 432, Block 433, Block 434, Block 435, Block 436, Block 437, Block 438, Block 439; Block Group 5: Block 501, Block 502, Block 503, Block 504, Block 505, Block 506, Block 507, Block 508, Block 509, Block 510, Block 511, Block 512, Block 513, Block 514, Block 515, Block 516, Block 517, Block 518, Block 519, Block 520, Block 521, Block 522, Block 523, Block 524, Block 525, Block 526, Block 527, Block 528, Block 529, Block 530, Block 531; Tract 0114.02: Block Group 1: Block 108; Block Group 2: Block 299B; Block Group 3: Block 399E.

VOTING PRECINCT 5-38
VOTING PLACE: FOLEY, CIVIC CENTER

This Voting Precinct is defined as follows:

Precinct 38: Baldwin County: Tract 011403: Block Group 2: Block 2023, Block 2024, Block 2025, Block 2026, Block 2027, Block 2028, Block 2029, Block 2030, Block 2031, Block 2036, Block 2037, Block 2038, Block 2039, Block 2040, Block 2041, Block 2042, Block 2043, Block 2044, Block 2045, Block 2046, Block 2047, Block 2048, Block 2049, Block 2050, Block 2051, Block 2052, Block 2053, Block 2060, Block 2061, Block 2062, Block 2063, Block 2064 and Block 2065; Tract 011500: Block Group 1: Block 1002, Block 1003, Block 1006, Block 1007, Block 1008, Block 1009, Block 1010, Block 1011, Block 1012, Block 1013, Block 1014, Block 1015, Block 1016, Block 1017, Block 1018, Block 1019, Block 1020, Block 1021, Block 1022, Block 1023, Block 1024, Block 1025, Block 1026, Block 1027, Block 1028,

Block 1029, Block 1030, Block 1031, Block 1032, Block 1033, Block 1034, Block 1035, Block 1036, Block 1037, Block 1038, Block 1039, Block 1040, Block 1041, Block 1042, Block 1043, Block 1044, Block 1045, Block 1046, Block 1047, Block 1048, Block 1049, Block 1050, Block 1051, Block 1052, Block 1053, Block 1054, Block 1055, Block 1056, Block 1057, Block 1058, Block 1059, Block 1060, Block 1061, Block 1062, Block 1063, Block 1064, Block 1065, Block 1066, Block 1067, Block 1068, Block 1069, Block 1070, Block 1071, Block 1072, Block 1073, Block 1074, Block 1075, Block 1076, Block 1077, Block 1078, Block 1079, Block 1080, Block 1081, Block 1082, Block 1083, Block 1084, Block 1085 and Block 1086; Block Group 2: Block 2000, Block 2001, Block 2002, Block 2003, Block 2004, Block 2005, Block 2006, Block 2007, Block 2008, Block 2009, Block 2010, Block 2011, Block 2012, Block 2013, Block 2014, Block 2015, Block 2016, Block 2020, Block 2021, Block 2022, Block 2023, Block 2024, Block 2025, Block 2026, Block 2027, Block 2028, Block 2029, Block 2030, Block 2031, Block 2032, Block 2033, Block 2034, Block 2035, Block 2036, Block 2037, Block 2038, Block 2039, Block 2040, Block 2041, Block 2042, Block 2043, Block 2044, Block 2045, Block 2046, Block 2047, Block 2048, Block 2049, Block 2050, Block 2051, Block 2052, Block 2053, Block 2054, Block 2055, Block 2056, Block 2057, Block 2058, Block 2059, Block 2060, Block 2061, Block 2062, Block 2063, Block 2064, Block 2065, Block 2066, Block 2067, Block 2068, Block 2069, Block 2070, Block 2071, Block 2072, Block 2073, Block 2074, Block 2075, Block 2076, Block 2077, Block 2078, Block 2079, Block 2080, Block 2081, Block 2082, Block 2083, Block 2084, Block 2085, Block 2086, Block 2087, Block 2088, Block 2090, Block 2091, Block 2095, Block 2096, Block 2097, Block 2098, Block 2099, Block 2100, Block 2101, Block 2102, Block 2103, Block 2104, Block 2105, Block 2106, Block 2107, Block 2108, Block 2109, Block 2110, Block 2111 and Block 2997; Block Group 3: Block 3000, Block 3001, Block 3002, Block 3003, Block 3004, Block 3005, Block 3006, Block 3007, Block 3008, Block 3009, Block 3010, Block 3011, Block 3012, Block 3013, Block 3014, Block 3015, Block 3016, Block 3017, Block 3018, Block 3019, Block 3020, Block 3021, Block 3022, Block 3023, Block 3024, Block 3025, Block 3026, Block 3027, Block 3028, Block 3029, Block 3030, Block 3031, Block 3032, Block 3033, Block 3034, Block 3035, Block 3036, Block 3037, Block 3038, Block 3039, Block 3040, Block 3041, Block 3042, Block 3043, Block 3044, Block 3045, Block 3046, Block 3047, Block 3048, Block 3049, Block 3050, Block 3051, Block 3052, Block 3053, Block 3054, Block 3055 and Block 3056; Block Group 4: Block 4002, Block 4003, Block 4004, Block 4005, Block 4006, Block 4007, Block 4008, Block 4009, Block 4010, Block 4011, Block 4012, Block 4013, Block 4014, Block 4015, Block 4016, Block 4017, Block 4018, Block 4019, Block 4020, Block 4021, Block 4022, Block 4023, Block 4024, Block 4025, Block 4026, Block 4027, Block 4028, Block 4029, Block 4030, Block 4031, Block 4032, Block 4054,

Block 4055, Block 4060, Block 4073, Block 4074, Block 4085, Block 4086, Block 4087, Block 4088, Block 4089, Block 4090, Block 4091 and Block 4092; Block Group 5: Block 5001, Block 5002, Block 5003, Block 5004, Block 5005, Block 5006, Block 5007, Block 5008, Block 5013, Block 5014, Block 5015, Block 5016, Block 5017, Block 5018, Block 5019, Block 5020, Block 5021, Block 5022, Block 5023, Block 5024, Block 5025, Block 5026, Block 5027, Block 5028, Block 5029, Block 5030, Block 5031, Block 5032, Block 5033, Block 5034, Block 5035, Block 5036, Block 5037, Block 5038, Block 5039, Block 5042, Block 5043, Block 5044, Block 5045, Block 5050, Block 5051, Block 5052, Block 5053, Block 5054, Block 5055, Block 5056, Block 5057, Block 5058, Block 5059, Block 5060, Block 5061, Block 5062, Block 5063, Block 5064, Block 5065, Block 5066, Block 5067, Block 5068, Block 5069, Block 5070, Block 5071, Block 5072, Block 5075, Block 5076, Block 5077, Block 5078, Block 5079, Block 5080, Block 5081, Block 5082, Block 5083, Block 5084, Block 5085, Block 5086, Block 5087, Block 5088, Block 5090, Block 5094 and Block 5095; Tract 011600: Block Group 1: Block 1004, Block 1005, Block 1006, Block 1007 and Block 1008.

VOTING PRECINCT 5-39
VOTING PLACE: GULF SHORES, ADULT ACTIVITY CENTER

This Voting Precinct is defined as follows:

Precinct 39: Baldwin County: Tract 11401: Block Group 4: Block 58; Tract 11403: Block Group 1, Block Group 2: Block 1, Block 2, Block 3, Block 4, Block 5, Block 6, Block 7, Block 8, Block 9, Block 10, Block 11, Block 12, Block 13, Block 14, Block 15, Block 16, Block 17, Block 18, Block 19, Block 20, Block 21, Block 22, Block 23, Block 24, Block 25, Block 26, Block 27, Block 28, Block 29, Block 30, Block 31, Block 32, Block 33, Block 34, Block 35, Block 36, Block 37, Block 38, Block 39, Block 40, Block 41, Block 42, Block 43, Block 44, Block 45, Block 46, Block 47, Block 48, Block 49, Block 50, Block 51, Block 52, Block 53, Block 54, Block 55, Block 56, Block 57, Block 58, Block 59, Block 60, Block 61, Block 62, Block 63, Block 64, Block 65, Block 66, Block 67, Block 68, Block 69, Block 70, Block 71, Block 72, Block 73, Block 74, Block 75, Block 76, Block 77, Block 78, Block 79, Block 80, Block 81, Block 82, Block 83, Block 84, Block 85, Block 86, Block 87, Block 88, Block 89, Block 90, Block 91, Block 92, Block 93, Block 94, Block 95, Block 96, Block 101, Block 102, Block 103, Block 104, Block 105, Block 106, Block 107, Block 108, Block 109, Block 110, Block 111, Block 112, Block 113, Block 114, Block 115, Block 116, Block 117, Block 118, Block 119, Block 120, Block 121, Block 122, Block 123, Block 124, Block 125, Block 126, Block 127, Block 128, Block 129, Block 130, Block 131, Block 132, Block 134, Block 135, Block 136, Block 137, Block 138, Block

139, Block 140, Block 141, Block 142, Block 143, Block 144, Block 145, Block 146, Block 147, Block 148, Block 149, Block 150, Block 151, Block 152, Block 153, Block 154, Block 155, Block 156, Block 157, Block 158, Block 159, Block 160; Block Group 3: Block 41, Block 44, Block 45, Block 46, Block 47, Block 48, Block 49, Block 50, Block 51, Block 52, Block 53, Block 54, Block 55, Block 56, Block 57, Block 58, Block 59, Block 60, Block 61, Block 62, Block 63, Block 64, Block 65, Block 66, Block 67, Block 68, Block 69, Block 70, Block 71, Block 72, Block 73, Block 74, Block 98, Block 99, Block 112, Block 113, Block 114, Block 115, Block 116, Block 117, Block 118, Block 119, Block 123, Block 126, Block 127, Block 128, Block 129, Block 130, Block 131, Block 133, Block 134, Block 149, Block 150, Block 154; Tract 11406: Block Group 1: Block 0, Block 1, Block 2, Block 3, Block 4, Block 5, Block 6, Block 7, Block 8, Block 9, Block 10, Block 11, Block 12, Block 13, Block 16, Block 17, Block 18, Block 19, Block 20, Block 21, Block 22, Block 23, Block 24, Block 25, Block 26, Block 27, Block 28, Block 29, Block 30, Block 31, Block 32, Block 33, Block 34, Block 35, Block 36, Block 37, Block 38, Block 39, Block 40, Block 41, Block 42, Block 43, Block 44, Block 45, Block 46, Block 47, Block 48, Block 49, Block 50, Block 51, Block 52, Block 53, Block 54, Block 55, Block 56, Block 57, Block 58, Block 59; Block Group 2: Block 41, Block 42, Block 43, Block 44, Block 45, Block 46, Block 47, Block 48, Block 49, Block 51, Block 62, Block 63, Block 64, Block 65, Block 66, Block 72, Block 73, Block 74, Block 75, Block 76, Block 77, Block 78, Block 79; Tract 11407: Block Group 3, Block Group 1: Block 0, Block 1, Block 2, Block 3, Block 4, Block 5, Block 6, Block 7, Block 8, Block 9, Block 10, Block 11, Block 12, Block 13, Block 14, Block 15, Block 16, Block 17, Block 18, Block 19, Block 20, Block 21, Block 22, Block 23, Block 24, Block 25, Block 26, Block 27, Block 28, Block 29, Block 30, Block 31, Block 32, Block 33, Block 34, Block 35, Block 36, Block 37, Block 38, Block 39, Block 40, Block 41, Block 42, Block 43, Block 44, Block 45, Block 46, Block 47, Block 48, Block 49, Block 50, Block 51, Block 52, Block 53, Block 54, Block 55, Block 56, Block 57, Block 58, Block 59, Block 60, Block 61, Block 62, Block 63, Block 64, Block 65, Block 66, Block 67, Block 68, Block 69, Block 70, Block 71, Block 72, Block 73, Block 74, Block 75, Block 76, Block 77, Block 78, Block 79, Block 80, Block 81, Block 82, Block 83, Block 84, Block 85, Block 86, Block 87, Block 88, Block 89, Block 90, Block 91, Block 92, Block 93, Block 94, Block 95, Block 96, Block 97, Block 98, Block 99, Block 100, Block 101, Block 102, Block 103, Block 108, Block 112, Block 113, Block 116, Block 117, Block 118; Block Group 2: Block 0, Block 1, Block 2, Block 3, Block 4, Block 5, Block 6, Block 7, Block 8, Block 9, Block 10, Block 11, Block 12, Block 13, Block 14, Block 15, Block 16, Block 17, Block 18, Block 19, Block 20, Block 21, Block 22, Block 23, Block 24, Block 25, Block 26, Block 27, Block 28, Block 29, Block 30, Block 31, Block 32, Block 33, Block 39, Block 40, Block 41, Block 42, Block 43, Block 44, Block 45, Block 46, Block 47, Block 48, Block 58, Block 59, Block 60, Block 61, Block 62, Block 63, Block 64, Block 65,

Block 66, Block 67, Block 68, Block 69, Block 70, Block 71, Block 72, Block 73, Block 74, Block 75, Block 76, Block 77, Block 79, Block 80, Block 81, Block 82; Tract 990000: Block Group 0: Block 23, Block 24, Block 38, Block 39.

**VOTING PRECINCT 5-40 VOTING PLACE: FORT MORGAN,
FORT MORGAN VOLUNTEER FIRE DEPARTMENT STATION #1**

Voting Precinct is defined as follows:

Precinct 40: Baldwin County: Tract 011404: Block Group 1: Block 1120, Block 1121, Block 1122, Block 1123, Block 1124, Block 1125, Block 1126, Block 1127, Block 1128, Block 1129, Block 1130 and Block 1131; Block Group 2: Block 2046, Block 2047, Block 2048, Block 2049, Block 2050, Block 2051, Block 2052, Block 2053, Block 2054, Block 2055, Block 2056, Block 2057, Block 2058, Block 2059, Block 2060, Block 2061, Block 2062, Block 2063, Block 2064, Block 2065, Block 2066, Block 2067, Block 2068, Block 2069, Block 2070, Block 2071, Block 2072, Block 2073, Block 2074, Block 2075, Block 2076, Block 2077, Block 2078, Block 2079, Block 2080, Block 2081, Block 2082, Block 2083, Block 2084, Block 2085, Block 2086, Block 2087, Block 2088, Block 2089, Block 2090, Block 2091, Block 2092, Block 2093, Block 2094, Block 2095, Block 2096, Block 2097, Block 2098, Block 2099, Block 2100, Block 2101, Block 2102, Block 2103, Block 2104, Block 2105, Block 2106, Block 2107, Block 2108, Block 2109, Block 2110, Block 2111, Block 2112, Block 2113, Block 2114, Block 2115, Block 2116, Block 2117, Block 2118, Block 2119, Block 2994 and Block 2998.

**VOTING PRECINCT 5-41
VOTING PLACE: ORANGE BEACH, COMMUNITY CENTER**

This Voting Precinct is defined as follows:

Precinct 41: Baldwin County: Tract 0114.02: Block Group 6: Block 601, Block 602, Block 603, Block 604, Block 605, Block 606, Block 607, Block 608, Block 609, Block 610, Block 611, Block 612, Block 613, Block 614, Block 615A, Block 615B, Block 615C, Block 616, Block 617, Block 618A, Block 618B, Block 619, Block 620A, Block 620B, Block 621, Block 622A, Block 622B, Block 623, Block 624C, Block 628B, Block 628C, Block 629A, Block 629B, Block 629C, Block 630, Block 631, Block 632A, Block 632B, Block 633, Block 634, Block 635, Block 636, Block 637, Block 638, Block 639, Block 640, Block 641, Block 642, Block 643A, Block 643B, Block 644, Block 645, Block 646, Block 647, Block 648, Block 649, Block 650A, Block 650B; Block Group 7, Block Group 8: Block 807, Block 808, Block 809, Block 810, Block 811, Block 812, Block 813, Block 814, Block 815, Block 816, Block 817, Block 818, Block 819, Block 820, Block 821, Block 822A, Block 822B, Block 823, Block 824, Block 825, Block 826B, Block 848B, Block 848C, Block 849,

Block 850, Block 875.

VOTING PRECINCT 6-42 A
VOTING PLACE: FAIRHOPE, CIVIC CENTER

This Voting Precinct is defined as follows:

Precinct 42 A: Baldwin County: Tract 10703: Block Group 1: Block 119, Block 121, Block 122, Block 123, Block 124, Block 125, Block 126, Block 127, Block 154, Block 155, Block 156, Block 157, Block 158, Block 159, Block 160, Block 161, Block 162, Block 163, Block 164, Block 165, Block 166, Block 167, Block 176, Block 177, Block 178, Block 183, Block 184, Block 185, Block 217, Block 218, Block 219, Block 220, Block 221, Block 222, Block 223, Block 224, Block 225, Block 226, Block 230, Block 231, Block 232, Block 233; Tract 10800: Block Group 3: Block 43, Block 45, Block 46, Block 64, Block 65, Block 66, Block 67, Block 68, Block 71, Block 76, Block 77, Block 79, Block 80, Block 81; Tract 11000: Block Group 1: Block 40; Tract 11101: Block Group 3: Block 7, Block 8, Block 9, Block 10, Block 11, Block 12, Block 13, Block 14, Block 19, Block 20, Block 21, Block 22, Block 23, Block 27, Block 28, Block 29, Block 34, Block 35, Block 36, Block 37, Block 38, Block 39, Block 40, Block 41, Block 42, Block 43, Block 44, Block 45, Block 46, Block 47, Block 48, Block 49, Block 50, Block 51, Block 52, Block 53, Block 54, Block 55, Block 56, Block 57, Block 58, Block 59, Block 60, Block 61, Block 62, Block 63, Block 64, Block 65, Block 66, Block 67, Block 68, Block 69, Block 70, Block 71, Block 72, Block 73, Block 74, Block 75, Block 76, Block 77, Block 78, Block 79, Block 80, Block 81, Block 82, Block 83; Tract 11102: Block Group 2: Block 41; Tract 11201: Block Group 2, Block Group 1: Block 0, Block 1, Block 2, Block 3, Block 4, Block 6, Block 7, Block 8, Block 9, Block 10, Block 20, Block 21, Block 22, Block 23, Block 24, Block 25, Block 26, Block 27, Block 28, Block 29, Block 30, Block 31, Block 32, Block 33, Block 34, Block 35, Block 36, Block 37, Block 38, Block 39, Block 40, Block 41, Block 42, Block 43, Block 44, Block 45, Block 46, Block 47, Block 48, Block 49, Block 50, Block 51, Block 52, Block 53, Block 54, Block 55, Block 56, Block 57, Block 58, Block 59, Block 60, Block 61, Block 62, Block 63, Block 64, Block 65, Block 67, Block 68, Block 69, Block 70, Block 71, Block 72, Block 73, Block 74, Block 75, Block 76, Block 77, Block 78, Block 79, Block 80, Block 81, Block 82; Tract 11202: Block Group 3, Block Group 4, Block Group 1: Block 0, Block 1, Block 2, Block 3, Block 4, Block 5, Block 6, Block 7, Block 8, Block 9, Block 10, Block 11, Block 12, Block 13, Block 14, Block 15, Block 16, Block 17, Block 18, Block 19, Block 20, Block 39, Block 40, Block 41, Block 42, Block 43, Block 44, Block 45, Block 46, Block 47, Block 49, Block 56, Block 57; Block Group 2: Block 0, Block 1, Block 2, Block 5, Block 6, Block 7, Block 8, Block 9, Block 10, Block 11, Block 12, Block 13, Block 14, Block 15, Block 16, Block 17, Block 18, Block 19, Block_20, Block 21, Block 22, Block 23, Block 24, Block 25, Block 26, Block 27, Block 28, Block 29, Block 30, Block 31, Block 32, Block 33, Block 34, Block 35, Block 36, Block 37, Block 38, Block 39, Block 40, Block 41, Block 42, Block 43, Block 44, Block 45, Block 46, Block 47; Tract 11401: Block Group 5: Block 12; Tract 990000: Block Group 0: Block 4, Block 5.

VOTING PRECINCT 6-42 B
VOTING PLACE: POINT CLEAR, ST. FRANCIS AT THE POINT

This Voting Precinct is defined as follows:

Precinct 42-B: Baldwin County: Tract 011202: Block Group 4: Block 4022, Block 4023, Block 4024 and Block 4025; Block Group 5: Block 5019, Block 5020, Block 5021, Block 5022, Block 5034, Block 5035, Block 5036, Block 5037 and Block 5038; Tract 011300: Block Group 1: Block 1000, Block 1001, Block 1002, Block 1003, Block 1004, Block 1005, Block 1006, Block 1007, Block 1008, Block 1009, Block 1010, Block 1011, Block 1012, Block 1013, Block 1014, Block 1015, Block 1016, Block 1017, Block 1018, Block 1019, Block 1020, Block 1021, Block 1022, Block 1998 and Block 1999; Block Group 2: Block 2000, Block 2001, Block 2002 and Block 2999.

VOTING PRECINCT 6-43
VOTING PLACE: EASTERN GREATER FAIRHOPE/WESTERN FISH RIVER, 3 CIRCLE CHURCH

This Voting Precinct is defined as follows:

Precinct 43: Baldwin County: Tract 10905: Block Group 1: Block 17, Block 69; Tract 11000: Block Group 1: Block 41; Tract 11101: Block Group 1, Block Group 2, Block Group 3: Block 0, Block 1, Block 2, Block 3, Block 4, Block 5, Block 6, Block 15, Block 16, Block 17, Block 18, Block 24, Block 25, Block 26, Block 30, Block 31, Block 32, Block 33; Tract 11102: Block Group 1, Block Group 2: Block 0, Block 1, Block 2, Block 3, Block 4, Block 5, Block 6, Block 7, Block 8, Block 9, Block 10, Block 11, Block 12, Block 13, Block 14, Block 15, Block 16, Block 17, Block 18, Block 19, Block 20, Block 21, Block 22, Block 23, Block 24, Block 25, Block 26, Block 27, Block 28, Block 29, Block 30, Block 31, Block 32, Block 33, Block 34, Block 35, Block 36, Block 37, Block 38, Block 39, Block 40, Block 42, Block 43, Block 44, Block 45, Block 46, Block 47, Block 48, Block 49, Block 50, Block 51, Block 52, Block 53, Block 54, Block 55, Block 56, Block 57, Block 58, Block 59, Block 60, Block 61, Block 62, Block 63, Block 64, Block 65, Block 66, Block 67, Block 68, Block 69, Block 70, Block 71, Block 72, Block 73, Block 74, Block 75, Block 76, Block 77, Block 78, Block 79, Block 80, Block 81, Block 82; Tract 11300: Block Group 4: Block 10, Block 11, Block 12, Block 13; Tract 11401: Block Group 5: Block 14.

VOTING PRECINCT 6-44

**VOTING PLACE: BARNWELL, VOLUNTEER FIRE AND RESCUE
DEPARTMENT**

Voting Precinct is defined as follows:

Precinct 44: Baldwin County: Tract 011300: Block Group 2: Block 2004, Block 2005, Block 2006, Block 2007, Block 2008, Block 2009, Block 2010, Block 2011, Block 2012, Block 2013, Block 2014, Block 2015, Block 2016, Block 2017, Block 2018, Block 2019, Block 2020, Block 2021, Block 2022, Block 2023, Block 2024, Block 2025, Block 2026, Block 2027, Block 2028, Block 2029, Block 2030, Block 2031 and Block 2998; Block Group 3: Block 3000, Block 3001, Block 3002, Block 3003, Block 3004, Block 3005, Block 3006, Block 3007, Block 3008, Block 3009, Block 3010, Block 3011, Block 3012, Block 3013, Block 3014, Block 3015 and Block 3999; Block Group 4: Block 4000, Block 4001, Block 4002, Block 4003, Block 4004, Block 4005, Block 4006, Block 4007, Block 4008, Block 4009, Block 4010, Block 4011, Block 4012, Block 4013, Block 4014, Block 4015, Block 4016, Block 4017, Block 4018, Block 4019 and Block 4999; Tract 011401: Block Group 1: Block 1997.

VOTING PRECINCT 7-45

VOTING PLACE: SPANISH FORT NORTH, EAST POINTE BAPTIST CHURCH

This Voting Precinct is defined as follows:

Precinct 45: Baldwin County: Tract 010300: Block Group 2: Block 2039, Block 2040, Block 2049, Block 2050, Block 2052, Block 2053, Block 2064, Block 2993, Block 2994, Block 2995, Block 2996 and Block 2997; Tract 010701: Block Group 1: Block 1007, Block 1008, Block 1009, Block 1010, Block 1011, Block 1012, Block 1013, Block 1014, Block 1015, Block 1034, Block 1035, Block 1036, Block 1037, Block 1038, Block 1039, Block 1040, Block 1041, Block 1042, Block 1043, Block 1044, Block 1045, Block 1046, Block 1047, Block 1048, Block 1049, Block 1050, Block 1051, Block 1052, Block 1053, Block 1054, Block 1055, Block 1056, Block 1057, Block 1058, Block 1059, Block 1060, Block 1061, Block 1062, Block 1063, Block 1064, Block 1065, Block 1066, Block 1067, Block 1068, Block 1069, Block 1070, Block 1071, Block 1072, Block 1073, Block 1074, Block 1075, Block 1076, Block 1077, Block 1078, Block 1079, Block 1080, Block 1086, Block 1087, Block 1088, Block 1089, Block 1090, Block 1091, Block 1092, Block 1093, Block 1100, Block 1144, Block 1145, Block 1146, Block 1147, Block 1148, Block 1149, Block 1151, Block 1152, Block 1153, Block 1155, Block 1156, Block 1157, Block 1159, Block 1160, Block 1984, Block 1985, Block 1993, Block 1994, Block 1995, Block 1996

and Block 1997; Tract 010703: Block Group 1: Block 1016, Block 1017, Block 1018 and Block 1996; Block Group 2: Block 2099, Block 2100, Block 2101, Block 2102, Block 2103, Block 2104, Block 2105, Block 2106, Block 2107, Block 2108, Block 2109, Block 2110, Block 2111, Block 2112, Block 2113, Block 2114, Block 2115, Block 2116, Block 2117, Block 2118, Block 2119, Block 2120, Block 2122, Block 2134, Block 2135, Block 2136, Block 2137 and Block 2139.

VOTING PRECINCT 7-46
VOTING PLACE: SPANISH FORT, FIRE DEPARTMENT

This Voting Precinct is defined as follows:

Precinct 46: Baldwin County: Tract 0107.01: Block Group 1: Block 123, Block 128, Block 130, Block 131, Block 132, Block 135, Block 136, Block 137, Block 138, Block 146, Block 149, Block 150, Block 151, Block 152, Block 153, Block 155, Block 156, Block 157, Block 158, Block 159, Block 160, Block 161, Block 177, Block 178, Block 179, Block 180, Block 181, Block 183, Block 184, Block 185, Block 186.

VOTING PRECINCT 7-47

(Abolished: territory realigned into Voting Precinct 7-49 pursuant to Resolution #2004-47 of the Baldwin County Commission, during the January 20, 2004, regular meeting; further, deactivated / undesignated Voting Place [Daphne St. Paul Episcopal Church]; further, such actions granted "Preclearance" from the United States Department of Justice, Civil Rights Division, Voting Section, on April 1, 2004).

VOTING PRECINCT 7-48
VOTING PLACE: DAPHNE, HIGH SCHOOL

Voting Precinct is defined as follows:

Precinct 48: Baldwin County: Tract 0107.02: Block Group 1: Block 105A, Block 106, Block 107A, Block 107B, Block 108, Block 113, Block 114, Block 115, Block 116, Block 117, Block 118A, Block 119A, Block 122, Block 123, Block 124, Block 125, Block 126, Block 127, Block 128, Block 129, Block 130, Block 131, Block 132, Block 133, Block 134A, Block 135, Block 136, Block 137, Block 138, Block 139, Block 140, Block 141, Block 142, Block 143, Block 144, Block 145, Block 146, Block 147, Block 148, Block 149, Block 150, Block 151, Block 184, Block 185, Block 186A, Block 187, Block 188, Block 189, Block 190; Block Group 2: Block 205A, Block 206.

VOTING PRECINCT 7-49
VOTING PLACE: DAPHNE, CIVIC CENTER

This Voting Precinct is defined as follows:

Precinct 49: Baldwin County: Tract 010701: Block Group 1: Block 1007; Tract 010703: Block Group 2: Block 2099, Block 2100, Block 2101, Block 2102, Block 2103, Block 2104, Block 2105, Block 2106, Block 2107, Block 2108, Block 2109, Block 2110, Block 2111, Block 2112, Block 2113, Block 2114, Block 2115, Block 2116, Block 2117, Block 2118, Block 2119, Block 2120, Block 2122, Block 2134, Block 2135, Block 2136, Block 2137, Block 2138 and Block 2139; Tract 010704: Block Group 1: Block 1005, Block 1006, Block 1007, Block 1008, Block 1040, Block 1041, Block 1042, Block 1043, Block 1045, Block 1995, Block 1996 and Block 1997; Tract 010705: Block Group 1: Block 1000, Block 1001, Block 1002, Block 1003, Block 1004, Block 1005, Block 1006, Block 1007, Block 1008, Block 1009, Block 1010, Block 1011, Block 1012, Block 1013 and Block 1999; Block Group 2: Block 2000, Block 2001, Block 2002, Block 2003, Block 2004, Block 2005, Block 2006, Block 2007, Block 2008, Block 2009, Block 2010, Block 2011, Block 2012, Block 2013, Block 2014, Block 2015, Block 2016, Block 2017, Block 2018, Block 2019, Block 2020, Block 2021, Block 2022, Block 2023, Block 2024, Block 2025, Block 2026, Block 2027, Block 2028, Block 2029, Block 2030, Block 2031, Block 2032, Block 2033, Block 2034, Block 2035, Block 2036, Block 2037, Block 2038, Block 2039, Block 2040, Block 2041, Block 2042, Block 2043, Block 2044, Block 2045, Block 2046, Block 2047, Block 2048, Block 2049, Block 2050, Block 2051, Block 2052, Block 2053, Block 2054, Block 2055, Block 2056, Block 2057, Block 2058, Block 2059, Block 2060, Block 2061, Block 2062, Block 2063, Block 2064, Block 2065, Block 2066, Block 2067, Block 2068, Block 2069, Block 2070, Block 2992, Block 2993, Block 2996, Block 2997, Block 2998 and Block 2999; Tract 010800: Block Group 1: Block 1000, Block 1001, Block 1002, Block 1003, Block 1004, Block 1005, Block 1006, Block 1007, Block 1008, Block 1009, Block 1010, Block 1011, Block 1012, Block 1013, Block 1014, Block 1015, Block 1016, Block 1017, Block 1018, Block 1019, Block 1020, Block 1021, Block 1022, Block 1023, Block 1024, Block 1025, Block 1026, Block 1027, Block 1028, Block 1029, Block 1030, Block 1031, Block 1032, Block 1033, Block 1034, Block 1035, Block 1036, Block 1037, Block 1038, Block 1039, Block 1040, Block 1041, Block 1042, Block 1043, Block 1044, Block 1045, Block 1046, Block 1047, Block 1048, Block 1049, Block 1050, Block 1051, Block 1052, Block 1053, Block 1054, Block 1055, Block 1056, Block 1057, Block 1058, Block 1059, Block 1062, Block 1063, Block 1064, Block 1065, Block 1066, Block 1067, Block 1068, Block 1069, Block 1070, Block 1071, Block 1072, Block 1073, Block 1074, Block 1075, Block

1076, Block 1077, Block 1078, Block 1079, Block 1080, Block 1081, Block 1082, Block 1086, Block 1088, Block 1089, Block 1090, Block 1091, Block 1092, Block 1093, Block 1094, Block 1095, Block 1096, Block 1097, Block 1098, Block 1099, Block 1100, Block 1101, Block 1102, Block 1103, Block 1104, Block 1105, Block 1106, Block 1107, Block 1108, Block 1109, Block 1110, Block 1111, Block 1112, Block 1113, Block 1114, Block 1115, Block 1116, Block 1117, Block 1118, Block 1119, Block 1120, Block 1121, Block 1122, Block 1123, Block 1124, Block 1125, Block 1126, Block 1127, Block 1128, Block 1129, Block 1130, Block 1131, Block 1132, Block 1133 and Block 1134; Block Group 2: Block 2000, Block 2001, Block 2002, Block 2003, Block 2004, Block 2005, Block 2006, Block 2007, Block 2008, Block 2009, Block 2010, Block 2011, Block 2012, Block 2013, Block 2014, Block 2015, Block 2016, Block 2017, Block 2018, Block 2019, Block 2020, Block 2021, Block 2022, Block 2023, Block 2024, Block 2025, Block 2026, Block 2027, Block 2028, Block 2029, Block 2030, Block 2031, Block 2032, Block 2033, Block 2034, Block 2035, Block 2036, Block 2037, Block 2038, Block 2039, Block 2040, Block 2041, Block 2042, Block 2043, Block 2044, Block 2045, Block 2046, Block 2047, Block 2048, Block 2049, Block 2050, Block 2051, Block 2052, Block 2053, Block 2054, Block 2055, Block 2056, Block 2057, Block 2058, Block 2059, Block 2060, Block 2061, Block 2062, Block 2063, Block 2064, Block 2065, Block 2066, Block 2067, Block 2068, Block 2069, Block 2070, Block 2071, Block 2072, Block 2073, Block 2074, Block 2075, Block 2076, Block 2077, Block 2078, Block 2079, Block 2080, Block 2081, Block 2082, Block 2083, Block 2084, Block 2085, Block 2086, Block 2087, Block 2088, Block 2089, Block 2090, Block 2091, Block 2092, Block 2093, Block 2094, Block 2095, Block 2096, Block 2097, Block 2098, Block 2099, Block 2100, Block 2101, Block 2102, Block 2103, Block 2104, Block 2105, Block 2106, Block 2107, Block 2108, Block 2109, Block 2110, Block 2998 and Block 2999; Tract 011201: Block Group 1: Block 1005, Block 1007, Block 1008, Block 1009, Block 1010, Block 1011, Block 1012, Block 1013, Block 1014, Block 1015, Block 1016 and Block 1999; Tract 011202: Block Group 4: Block 4999.

BE IT FURTHER RESOLVED AND ORDERED, that, as required by §17-6-1 through §17-6-9 Code of Alabama 1975, as amended, the County Commission of Baldwin County, Alabama, upon adoption, will file, as forwarded via Hand Delivery, with the Office of Judge of Probate of Baldwin County, Alabama, Office of Board of Registrars of Baldwin County, Alabama, and, via United States Postal Service Certified Mail, with the Reapportionment Office of the State of Alabama a certified copy of this Resolution, together with maps of the applicable areas of the county.

BE IT FURTHER RESOLVED AND ORDERED, that, pursuant to *Shelby County, Alabama v. Holder, Attorney General, et al.*, Supreme Court of the United States (as issued on June 25, 2013)

this instrument is not subject to Section 5 of the Voting Rights Act of 1965 (42 U.S.C. 1973c.), as amended.

DONE, at the County Seat, in Bay Minette, Alabama, and under the Seal of the County Commission of Baldwin County, Alabama, on this the 17th day of November, 2015.



Commissioner J. Tucker Dorsey, Chairman

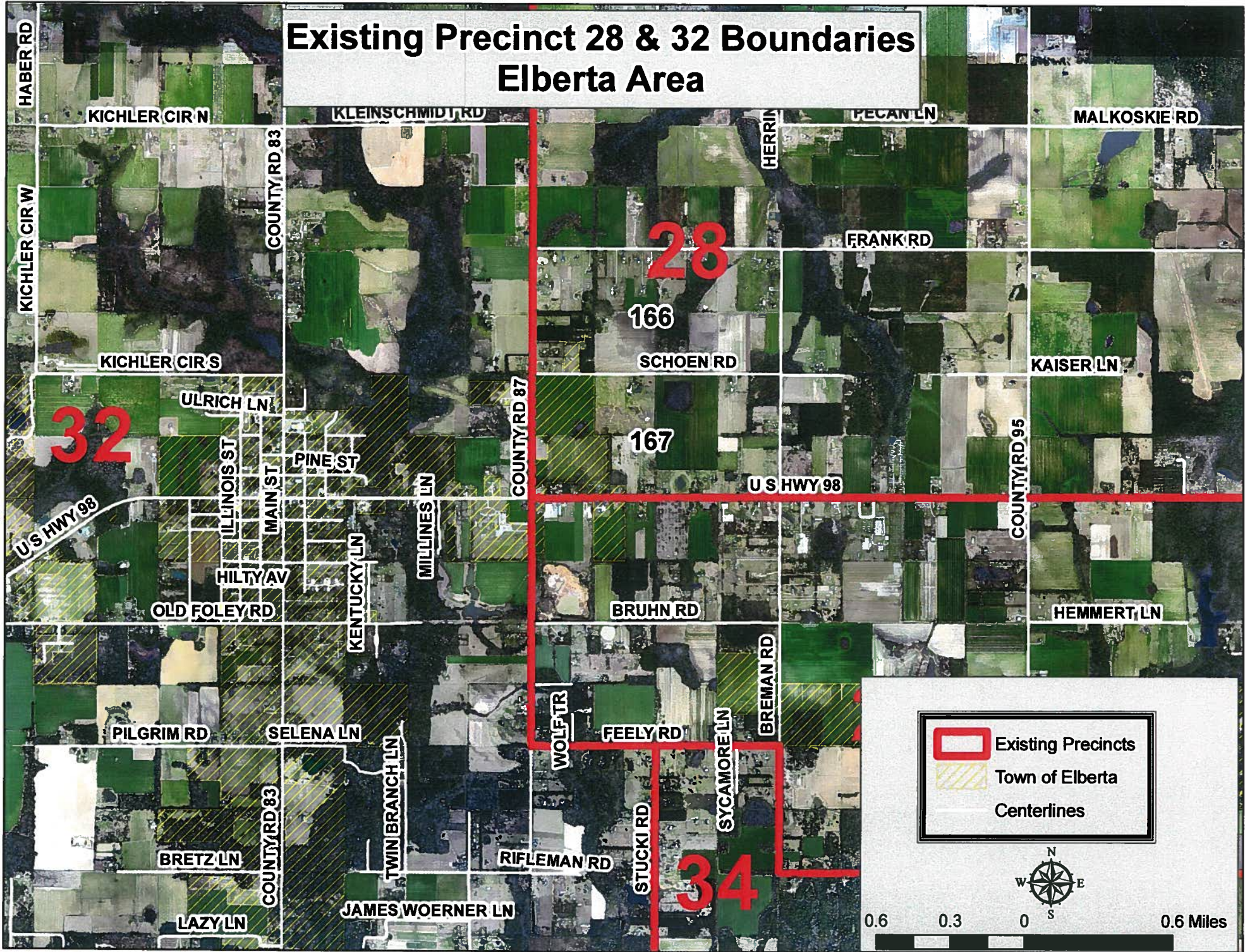
ATTEST:



Ronald J. Cink, County Administrator



Existing Precinct 28 & 32 Boundaries Elberta Area



Proposed Precinct 28 & 32 Boundaries Elberta Area

